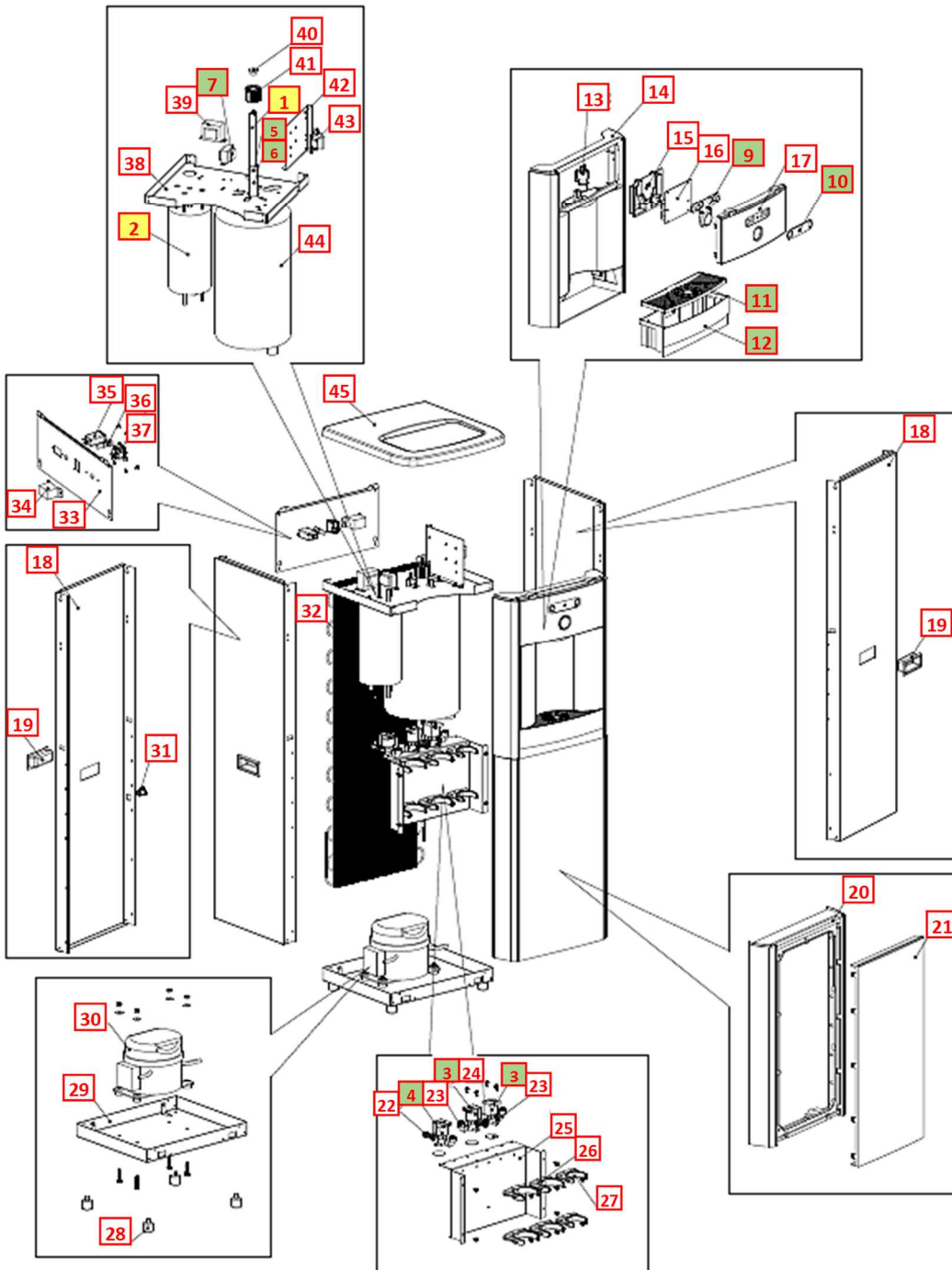
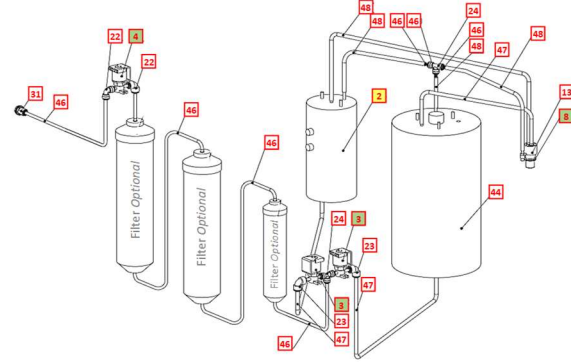


WL250 TOWER DRAWING AND PARTS LIST

Wetted Drawing

Yellow = Consumables
Green = Recommended spare parts





No	WLCP Part No.	Description	Part No	Cold Only	Hot & Cold	Stocked?	
Consumables							
1	10-2350	8W UV Lamp Assembly with Glow starter	CT-2001-100-00	X	X	Yes	
2	12-1405	Hot Tank Stainless Steel 1.6 Liter (87°C - 189°F)	HT-3018		X	Yes	
3	FT-0035	GAC Filter - 10" Carbon Activated Inline Filter - Optional Filter Element PN FT-0038-WLT	FT-0035-IL-WLT	X	X	Yes	
4	FT-0063	Carbon Block - 10" CBC 1-Micron Lead and Cyst Reduction Inline Filter Optional Filter Element PN FT-0064-WLT	FT-0063-IL-WLT	X	X	Yes	
5	FT-0053	Sediment Filter - 10" Sediment 20 Micron Inline Filter Optional Filter Element PN FT-0055-WLT	FT-0053-IL-WLT	X	X	Yes	
Recommended Spare Parts							
2.1	EL-0159-L00-00	Overload with Manual Reset - 97°C (206°F) <i>Recommend stocking 2 each per every 10 units purchased</i>	HT-3012		X	Yes	
2.2	EL-0035-L00-00	Hot Tank Thermostat - 85°C (185°F) <i>Recommend stocking 2 each per every 10 units purchased</i>	HT-3013A		X	Yes	
2.3	12-6900	Hot Tank Supplemental Steel Enclosure <i>Recommend stocking 2 each per every 10 units ordered</i>	ST-8290		X	Yes	
3	12-1500	Solenoid Valve 1000 mm <i>Recommend stocking 2 each per every 10 units purchased</i>	PU-4016	X	X	Yes	

3.1	CU-0001	Solenoid Cushion <i>Recommend stocking 2 each per every 10 units purchased</i>	CU-0001	X	X	Yes	
4	12-5665	Solenoid Valve 24 DC Single Spring Load <i>Recommend stocking 1 each per every 10 units purchased</i>	PU-4164		X	Yes	
5	10-2500	Black O-Ring for Quartz Sleeve <i>Recommend stocking 1 each per every 10 units ordered</i>	CT-2006	X	X	Yes	
6	10-1400	Quartz Sleeve for 8W Lamp <i>Recommend stocking 1 each per every 10 units ordered</i>	CT-2002	X	X	Yes	
7	10-3010	UV Lamp Ballast 120V 60Hz 8W	EL-5006-A CN	X	X	Yes	
8	10-3048	Blue Faucet Nipple, with Stainless Steel Gauze <i>Recommend stocking 2 each per every 10 units ordered</i>	PL-1013	X	X	Yes	
8.1	10-2600	White Silicon Faucet O-Ring <i>Recommend stocking 2 each per every 10 units ordered</i>	CT-2007	X	X	Yes	
9	12-8056	Silicon Button Key Mat <i>Hot and Cold</i> <i>Recommend stocking 5 each per every 10 units ordered</i>	PL-1153		X	Yes	
	12-8600	Silicon Button Key Mat <i>Cold only</i> <i>Recommend stocking 5 each per every 10 units ordered</i>	PL-1100	X		Yes	
10	12-8057	Button Label <i>Hot and Cold</i> <i>Recommend stocking 2 each per every 10 units ordered</i>	LP-7084		X	Yes	
	12-8610	Button Label <i>Cold Only</i> <i>Recommend stocking 2 each per every 10 units ordered</i>	LP-7085	X		Yes	



11	12-8150	Drip Tray Grill <i>Recommend stocking 4 each per every 10 units ordered</i>	PL-1152	X	X	Yes	
12	12-8055	Drip Tray Body with Waterlogic Logo <i>Recommend stocking 4 each per every 10 units ordered</i>	PL-1156	X	X	Yes	
Not Shown	01-2076	ScaleKleen <i>Recommend stocking 5 each per every 10 units ordered</i>	NA	X	X	Yes	
Remaining Parts							
13	10-2700	Faucet Assembly – Hot and Cold	PL-1011		X	Yes	
	NA	Faucet <i>Cold Only</i>	PL-1012	X		Yes	
14	12-8050	Front Panel for Drip Tray Insert <i>when purchasing, also request Hot Water Caution Label LP-7169 / 12-0001 to adhere to front of this panel.</i>	PL-1146	X	X	Yes	
14.1	12-0001	Hot Water Caution Label Adhere to Front Panel for Drip Tray Insert	LP-7169		X	Yes	
15	12-3160	PCB Cover	PL-1298	X	X	Yes	
16	12-3115	PCB for Leak Detection Hot and Cold	EN-6085-A		X	Yes	
	12-8615	PCB for Cold Water	EN-6086	X		Yes	

17	12-8051	Front Upper Panel * <i>Sold Separately:</i> <i>Silicon Button Key Mat</i> <i>P/N 12-8600 Cold Only</i> <i>Button Label:</i> <i>P/N 12-8056 Hot and Cold;</i> <i>P/N 12-8610 Cold Only.</i>	PL-1147-B	X	X	Yes	
18	12-8000	Silver Side Panel with Hole for Handle	ST-8157	X	X	Yes	
19	12-8058	Side Panel Plastic Handle	PL-1123	X	X	Yes	
20	12-8052	Front Lower Panel	PL-1148	X	X	Yes	
21	12-8053	Front Lower Insert Panel	PL-1149	X	X	Yes	
22	Purchase from John Guest	JG Equal Elbow Connector 1/4"	PU-4008	X	X	No	
23	Purchase from John Guest	JG Reducing Elbow Connector 5/16" * 1/4"	PU-4007	X	X	No	
24	Purchase from John Guest	JG Equal Tee Connector 1/4"	PU-4011	X	X	No	
25	12-8003	Filter Bracket	ST-8138	X	X	Yes	
26	10-3099	3" Filter Clip	PU-4024	X	X	Yes	
27	10-3098	2" Filter Clip for In-Line Filter	PU-4025	X	X	Yes	




28	10-3083	Unit Control Rubber Feet	ST-8167CN	X	X	Yes	
29	12-8004	Bottom Tray	ST-8137	X	X	Yes	

Verify compressor in machine before ordering parts as the Compressor P/N CO-0020-L00-00 and 10-2200 (CO-0001A) and related parts are not interchangeable.

CO-0020-L00-00 LG Compressor

30A.1	CO-0020-L00-00	LG Compressor 120V R134A CSB035LJCM	CO-0020-L00-00	X	X	Yes	
30A.2	CO-0019-L00-00	Compressor Capacitor	CO-0019-L00-00	X	X	Yes	
30A.3	ST-0216-L00-00	Capacitor Bracket	ST-0216-L00-00	X	X	Yes	
30A.4	CO-0017-L00-00	PTC Relay	CO-0017-L00-00	X	X	Yes	
30A.5	CO-0018-L00-00	Overload Protector	CO-0018-L00-00	X	X	Yes	

CO-9001-A / 10-2200 Compressor

30B.1	10-2200	Compressor (R134a 1/8HP) 110V/60Hz	CO-9001-A	X	X	Yes	
30B.2	10-3003	Compressor Starter Relay	CO-9016	X	X	Yes	
30B.3	10-5018	Compressor Overload	CO-9015	X	X	Yes	
30.1	12-1001	Filter Dryer	CO-9008	X	X	Yes	

31	10-3067	Bulkhead Union ¼" x ¼" John Guest P/N PI1208S	PU-4028	X	X	Yes	
32	12-8102	Wire Condenser	CO-9027	X	X	Special Order	
33	12-8002	Back Panel Silver	ST-8135	X	X	No	
34	12-1101	Cold Tank Thermostat	CT-2016	X	X	Yes	
34.1	LP-0326	Cold Thermostat Cover Label	PL-0326-L00-00	X	X	Yes	
35	10-4013	Power Line Noise Filter, ElectroMagnetic Interference filter (EMI)	EL-5016	X	X	Yes	
36	10-3014	Fuse Holder and Fuse 120V / 15A with One Wire	EL-5053	X	X	Yes	
36.1	10-3013	Fuse 120V / 15A	EL-5010	X	X	Yes	
37	10-3008	Red Compressor and Heater Switch	EL-5004	X	X	Yes	
38	12-8003	Upper Shelf	ST-8136-R2	X	X	Yes	
39	12-3117	Power Transformer 120V	EL-5003-A	X	X	Yes	
40	PL-0235-L00-00	4W UV Fixing Rubber <i>Included in UV Lamp Assembly</i>	PL-0235-L00-00	X	X	Yes	
41	12-1210	UV Lamp Retaining Threaded Nut	PL-1128	X	X	Yes	

42	12-5245	Main PCB Bracket	ST-8165-CN	X	X	Yes	
43	12-8510	3 Minute UV Timer PCB Hot and Cold	AK-0008-A		X	Yes	
	12-8520	3 Minute UV Timer PCB Cold Only	AK-0008-C	X		Yes	
43.1	10-3017	PCB Stand-off Pin	EN-6059	X	X	Yes	
44	NA	Cold Tank 4 Liter Assembly with UV Holder	CT-2050	X	X	No	
45	12-8054	Top Cover – Charcoal	PL-1150	X	X	Yes	
46	10-3062	JG LLDPE Tube - Blue 8mm John Guest P/N PE-0806-100M-B	PU-4014	X	X	Yes	
47	NA	JG LLD PE Tube - Blue O.D.1/4" John Guest P/N PE-08-BI-1000F-B	PU-4031	X	X	Purchase from John Guest	
48	10-7040	Silicon Tube 5/16" for Hot Water	PU-4064		X	Yes	
Not Shown	10-3007	Power Cord 120V – 1840 mm	EL-5001-B	X	X	Yes	

WL250 TOWER WATER FLOW DIAGRAM

