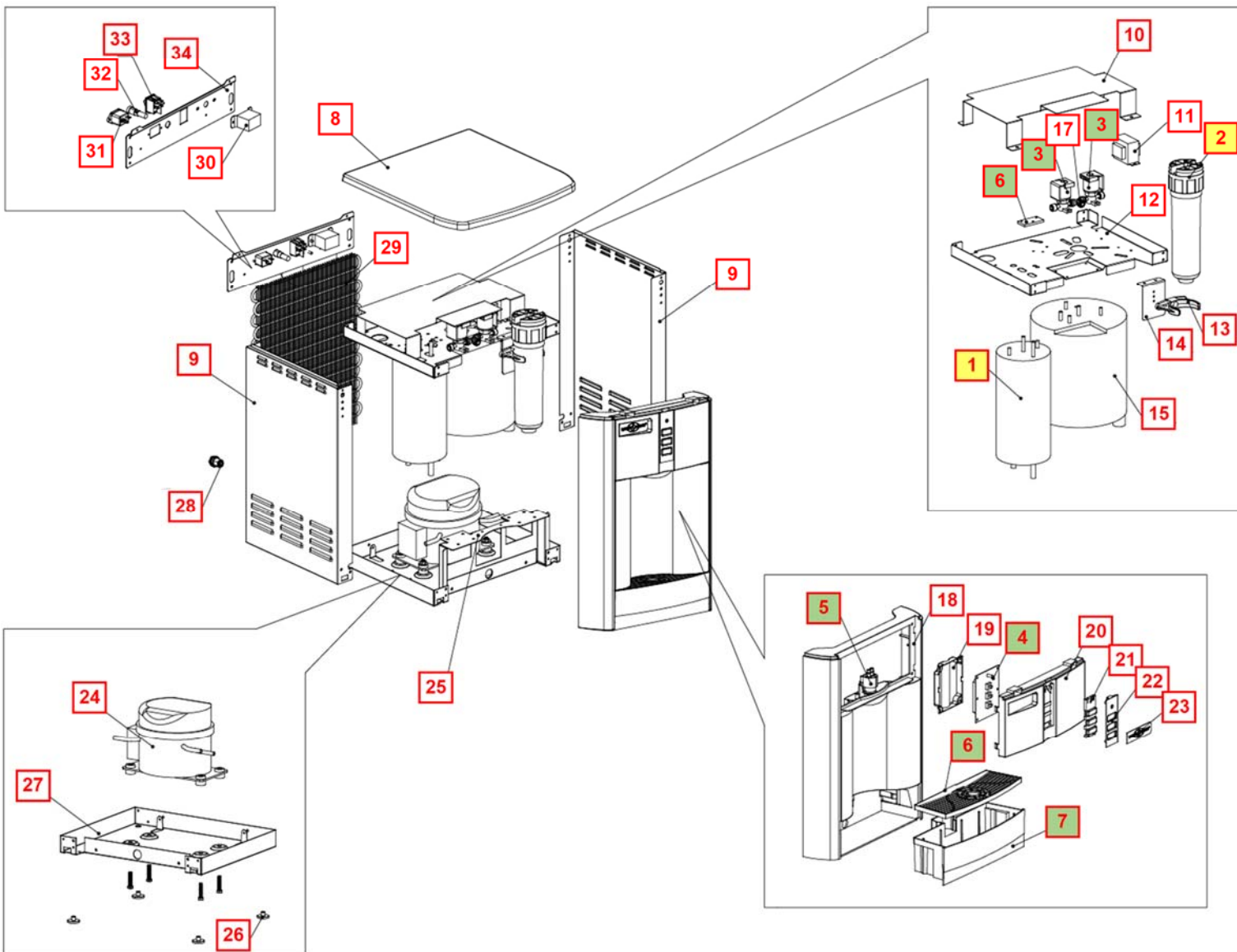
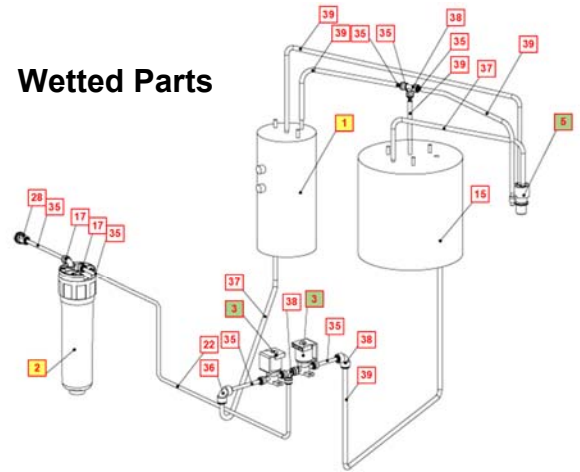






WL100 COUNTER TOP DRAWINGS AND PARTS LIST

Yellow = Consumables

Green = Recommended spare parts

Wetted Parts



No	WLCP Part No.	Description	Part No	Stocked?	
Consumables					
1	12-5615	Hot Tank 1.6 Liter 100V / 500W Factory Set Point 85°C (185°F)	HT-3041	Yes	
2	FT-0035	GAC Filter - 10" Carbon Activated Inline Filter Optional Filter Element PN FT-0038	FT-0035-IL-WLT	Yes	
Recommended Spare Parts					
1.1	12-6900	Thermostat and Overload Metal Cover <i>Recommend stocking 2 each for every 10 units purchased</i>	ST-8290	Yes	
1.2	EL-0159	Overload with Manual Reset - 97°C (207°F) <i>Recommend stocking 2 each for every 10 units purchased</i>	EL-0159-L00-00	Yes	
1.3	12-1303	Hot Tank Thermostat - 85°C (185°F) <i>Recommend stocking 2 each for every 10 units purchased</i>	HT-3013A	Yes	
3	12-5665	Solenoid Valve with Terminal at Outlet Position <i>Recommend stocking 5 each for every 10 units purchased</i>	PU-4164-L00-00	Yes	
3.1	CU-0001	Solenoid Cushion <i>Recommend stocking 5 each for every 10 units purchased</i>	CU-0001	Yes	
4	20-0040	Display PCB <i>Recommend stocking 2 each for every 10 units purchased</i>	EN-6130	Yes	
5	10-2700	Faucet Assembly <i>Recommend stocking 2 each for every 10 units purchased</i>	PL-1011	Yes	
5.1	10-2600	Natural Faucet O-Ring – Silicon White <i>Recommend stocking 2 each for every 10 units purchased</i>	CT-2007	Yes	

5.2	10-3048	Faucet Nipple – Blue with Screen <i>Recommend stocking 2 each for every 10 units purchased</i>	PL-1013	Yes	
6	20-1040	Drip Tray Grill Charcoal <i>Recommend stocking 5 each for every 10 units purchased</i>	PL-1362-L00-CL	Yes	
	20-0065	Drip Tray Grill – Blue <i>Recommend stocking 5 each for every 10 units purchased</i>	PL-1362	Yes	
7	20-1035	Drip Tray Body – Charcoal No Logo <i>Recommend stocking 5 each for every 10 units purchased</i>	PL-1361-L00-CL	Yes	
	20-0070	Drip Tray Body – Blue No Logo <i>Recommend stocking 5 each for every 10 units purchased</i>	PL-1361	Yes	
Remainder of Parts					
8	20-1045	Top Cover Flat - Charcoal Textured	PL-1366-L00-CL	Yes	
	20-0005	Top Cover Flat – Blue	PL-1366	Yes	
9	12-5675	Side Panel – Counter Top only	ST-8148-A	Yes	
10	12-6900	High Voltage Cover Counter Top Only	ST-8301	Yes	
11	12-1200	Power Transformer 120V / 60Hz	EL-5021	Yes	
12	12-3165	Upper Shelf Counter Top Only	ST-8150-B	Yes	
13	20-1010	2.8” Filter Clip for In-Line Filter	PU-4161	Q	

14	20-1015	Filter Bracket Counter Top Only	ST-8326	Yes	
15	NA	2 Liter Cold Tank Countertop Only	CT-2087-A	Special Order	
16	20-0075	Energy Saver PCB	EN-6131	Yes	
16.1	20-1005	Jumper Pin	EN-6082	Yes	
17	NA	1/4" Union Elbow John Guest P/N P10308S	PU-4008	Purchase from John Guest	
18	20-0030	Front Upper Drip Tray Insert Panel - when purchasing, also request Hot Water Caution Label LP-7169 / 12-0001 to adhere to front of this Panel.	PL-1365	Yes	
18.1	12-0001	Hot Water Caution Label – Adhere to Front Upper Drip Tray Insert Panel.	LP-7169	Yes	
19	20-0035	Front PCB Cover	PL-1369	Yes	
20	20-1050	Front Upper Insert Panel - Charcoal	PL-1367-L00-CL-BIO	Yes	
	20-0045	Front upper Insert Panel – Blue	PL-1367	Yes	
21	20-0050	Silicon Button Keymat	PL-1370	Yes	
22	20-0055	Button PCB Insert Panel - Silver	PL-1368	Yes	
23	20-1030	WL100 Label – Front Upper Insert Panel - Charcoal	LP-0269-L00-00	Yes	

	20-0060	WL100 Label – Front Upper Insert Panel – Blue	LP-7292	Yes	
24	NA	Compressor 120V / 60Hz	CO-9045	Special Order	
24.1	12-1001	Filter Dryer	CO-9008	Yes	
24.2	10-3003	Compressor Starter Relay	CO-9016	Yes	
24.3	10-5018	Compressor Overload	CO-9015	Yes	
25	12-3175	Filter Bracket Counter Top Only	ST-8152-B	Yes	
26	12-3150	Unit Rubber Feet – Counter Top Only	PL-1251-CN	Yes	
27	12-3170	Bottom Panel Counter Top Only	ST-8151-A	Yes	
28	10-3067	Bulkhead Union ¼" x ¼" John Guest P/N PI1208S	PU-4028	Yes	
29	12-3100	Wire Condenser Counter Top Only	CO-9031	Special Order	
30	19-1069	Cold Tank Thermostat	CT-2070-A	Yes	
30.1	LP-0326	Cold Adjustment Cover Label	LP-0326-L00-00	Yes	
31	19-1090	Socket for Plug Connection	EL-0061-L00-00	Yes	
31.1	19-1015	Gasket for Power Socket	ST-8052	Yes	

32	10-3014	Fuse Holder and Fuse 120V / 15A with One Wire	EL-5053	Yes	
32.1	10-3013	Fuse 120V / 15A	EL-5010	Yes	
33	12-5600	Red Heater and Compressor Switch	EL-5019-A	Yes	
34	12-5674	Back Panel – Silver Countertop Only	ST-8253	No	
35	NA	JG LLD PE Tube - Blue O.D.1/4" John Guest P/N PE-08-BI-1000F-B	PU-4031	Purchase from John Guest	
36	NA	5/16" X 1/4" Reducing Elbow John Guest P/N PI211008S	PU-4007	Purchase from John Guest	
37	10-3062	JG LLDPE Tube - Blue 8mm John Guest P/N PE-0806-100M-B	PU-4014-A	Yes	
36	NA	1/4" Union Tee John Guest P/N P10208S	PU-4011-A	Purchase from John Guest	
39	10-7040	Silicon Tube 5/16" for Hot Water	PU-4064	Yes	
Not Shown	10-3007	Power Cord – 120V / 60Hz	EL-5001-B	Yes	