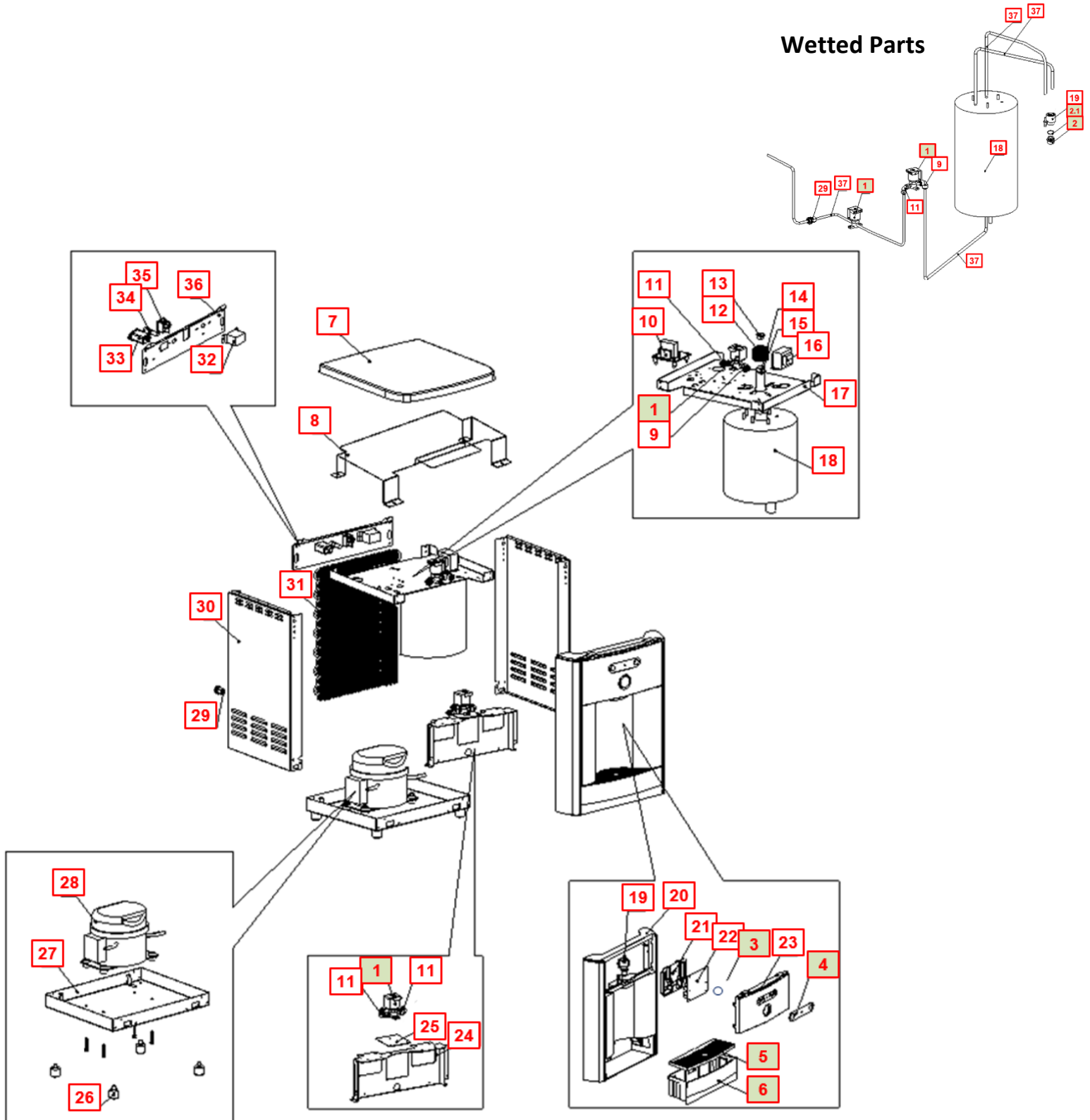


WL200 COUNTER TOP DRAWINGS with PART NUMBERS





No	WLCP Part No.	Description	Part No	Stocked?	
Consumables					
Optional	FT-0035	GAC Filter - 10" Carbon Activated Inline Filter - Optional <i>Filter Element PN FT-0038-WLT</i>	FT-0035-IL-WLT	Yes	
Optional	FT-0063	Carbon Block - 10" CBC 1-Micron Lead and Cyst Reduction Inline Filter - Optional <i>Filter Element PN FT-0064-WLT</i>	FT-0063-IL-WLT	Yes	
Optional	FT-0053	Sediment Filter - 10" Sediment 20 Micron Inline Filter Optional <i>Filter Element PN FT-0055-WLT</i>	FT-0053-IL-WLT	Yes	
Recommended Spare Parts					
1	12-1500	Solenoid Valve 500 mm <i>Recommend stocking 2 each per every 10 units purchased</i>	PU-4016	Yes	
1.1	CU-0001	Solenoid Cushion <i>Recommend stocking 2 each per every 10 units purchased</i>	CU-0001	Yes	
2	10-3048	Faucet Nipple – Blue with Screen <i>Recommend stocking 2 each per every 10 units purchased</i>	PL-1013	Yes	
3	12-8600	Silicon Button Key Mat Cold Only <i>Recommend stocking 5 each per every 10 units purchased</i>	PL-1100	Yes	
4	12-8610	Button Label - Cold Only <i>Recommend stocking 2 each per every 10 units purchased</i>	LP-7085	Yes	
5	12-8150	Drip Tray Grill – Charcoal <i>Recommend stocking 4 each per every 10 units purchased</i>	PL-1152	Yes	
6	12-8055	Drip Tray - Charcoal with Waterlogic Logo <i>Recommend stocking 4 each per every 10 units purchased</i>	PL-1156	Yes	
Not Shown	01-2076	ScaleKleen <i>Recommend stocking 2 each per every 10 units purchased</i>	NA	Yes	

Remaining of Parts					
7	12-8060	Flat Top Cover - Charcoal with Texture Counter Top Only	PL-1249-CN	Yes	
8	ST-0049-L00-00	High Voltage Metal Cover (ETL-Certification) Counter Top Only	ST-0049-L00-00	Yes	
9	Purchase from John Guest	5/16" x 1/4" Reducing Elbow John Guest P/N PI211008S	PU-4007	No	
10	NA	Leak Detection PCB	EN-6111-A	No	
10.1	10-3017	PCB Stand-off Pin	EN-6059	Yes	
11	Purchase from John Guest	1/4" Union Elbow John Guest P/N P10308S	PU-4008	No	
12	12-1210	UV Lamp Retaining Threaded Nut Counter Top Only	PL-1128	Yes	
13	10-8085	UV Lamp Fixing Rubber (Silicon) Counter Top Only	CT-2001-B	Yes	
14	NA	Quartz Sleeve (100mm) Counter Top Only	CT-2062-CN	No	
15	10-2500	Black O-Ring for Quartz Sleeve Counter Top Only	CT-2006	Yes	
16	12-3117	Power Transformer 120V	EL-5003-A	Yes	
17	12-3165	Upper Shelf Counter Top Only	ST-8150-B	Yes	

18	12-3110	2L UV Cold Tank Assembly Counter Top Only	CT-2060	Yes	
19	NA	Faucet - Cold only	PL-1012	Yes	
19.1	10-2600	Natural Faucet O-Ring – Silicon White	CT-2007	Yes	
20	12-8050	Front Upper Drip Tray Insert Panel	PL-1146	Yes	
21	12-8605	PCB Cover	PL-1180-CN	Yes	
22	12-8615	Main PCB	EN-6086	Yes	
23	NA	Front Upper Insert Panel - Charcoal	PL-0084-L00-CL	No	
24	12-3175	Filter Bracket Counter Top Only	ST-8152	Yes	
25	12-3195	Leak System Inlet Solenoid Bracket	ST-8244	Yes	
26	12-3150	Unit Rubber Feet Counter Top Only	PL-1251-CN	Yes	
27	12-3170	Bottom Tray Counter Top Only	ST-8151	Yes	

Verify compressor in machine before ordering parts as the Compressor P/N CO-0020-L00-00 and 10-2200 (CO-0001A) and related parts are not interchangeable.

CO-0020-L00-00 Compressor

34A.1	CO-0020-L00-00	LG Compressor 120V R134A CSB035LJCM	CO-0020-L00-00	Yes	
34A.2	CO-0019-L00-00	Compressor Capacitor	CO-0019-L00-00	Yes	
34A.3	ST-0216-L00-00	Capacitor Bracket	ST-0216-L00-00	Yes	
34A.4	CO-0017-L00-00	PTC Relay	CO-0017-L00-00	Yes	
34A.5	CO-0018-L00-00	Overload Protector	CO-0018-L00-00	Yes	

CO-9001-A / 10-2200 Compressor

34B.1	10-2200	Compressor (R134a 1/8HP) 120V/60Hz	CO-9001-A	Yes	
34B.2	10-3003	Compressor Starter Relay	CO-9016	Yes	
34B.3	10-5018	Compressor Overload	CO-9015	Yes	
28.1	12-1001	Filter Dryer	CO-9008	Yes	
29	10-3067	Bulkhead Union 1/4" x 1/4" John Guest P/N PI1208S	PU-4028	Yes	
30	12-8062	Side Panel Counter Top Only	ST-8245	Yes	
31	12-3100	Wire Condenser Counter Top Only	CO-9031	Special Order	

32	12-1101	Cold Tank Thermostat – included with Cold Tank	CT-2016	Yes	
33	10-4013	Power Line Noise Filter, ElectroMagnetic Interference filter (EMI)	EL-5016	Yes	
34	EL-5053	Fuse Holder and Fuse 120V / 15A with One Wire	EL-5053	Yes	
34.1	10-3013	Fuse 120V / 15A	EL-5010	Yes	
35	12-5600	Red Power and Compressor Switch	EL-5019-A	Yes	
36	12-8061	Silver Back Panel Counter Top Only	ST-8216	Yes	
37	Purchase from John Guest	JG LLD PE Tube - Blue O.D.1/4"John Guest P/N PE-08-BI-1000F-B	PU-4031	No	
Not Shown	10-3007	Power Cord – 120V	EL-5001-B	Yes	