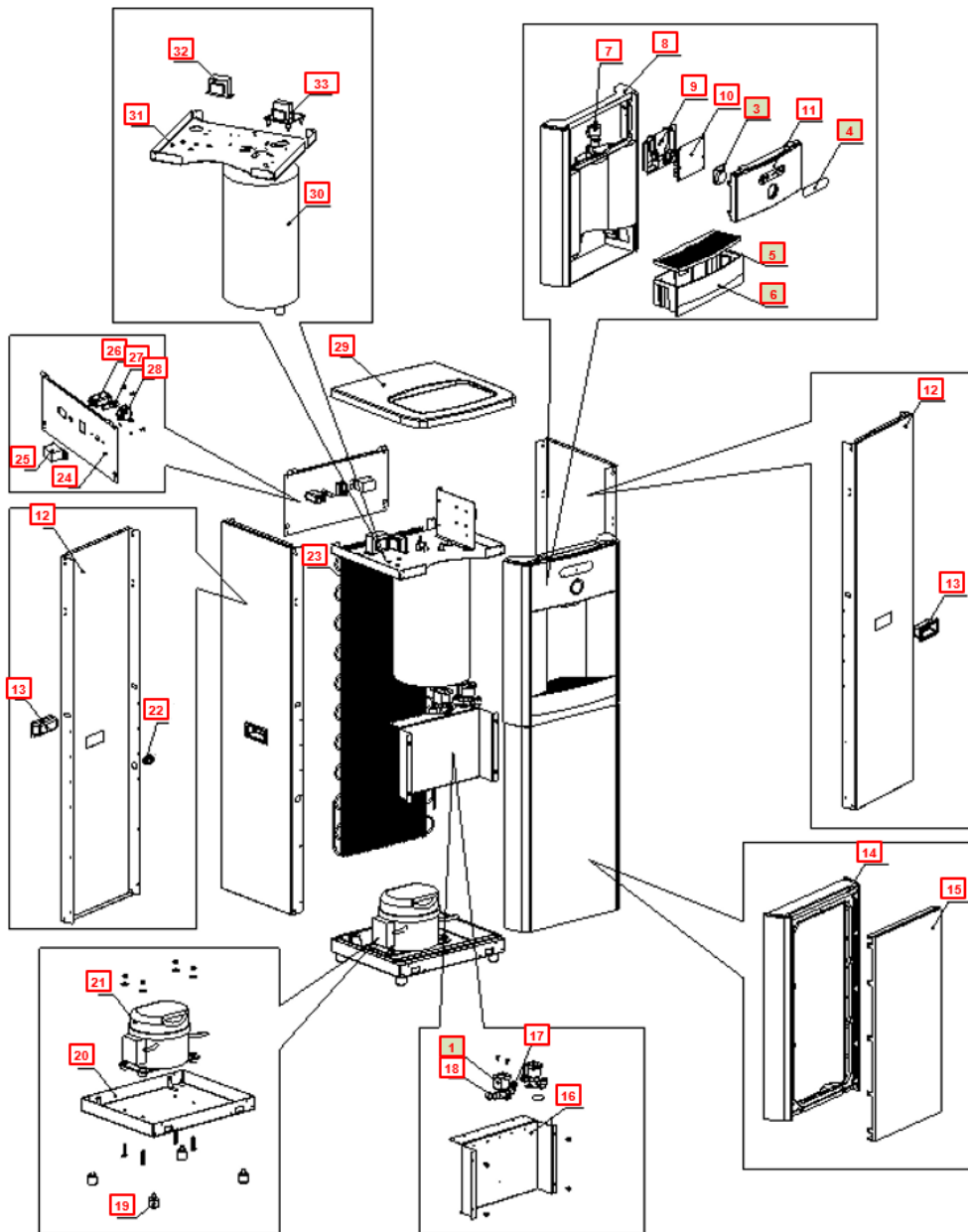
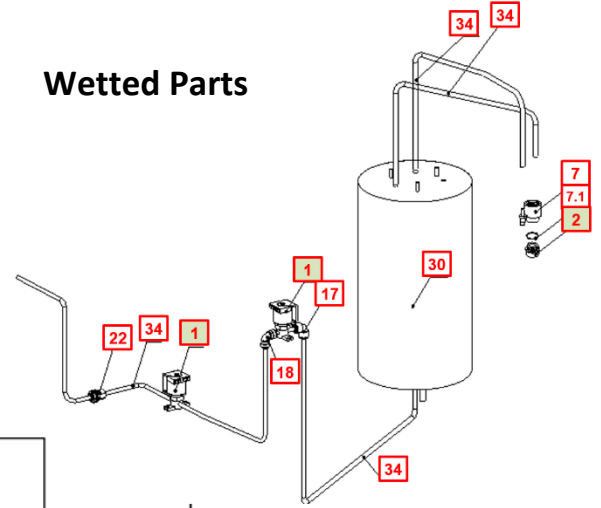


## WL200 TOWER DRAWINGS with PART NUMBERS

### Wetted Parts





No	WLCP Part No.	Description	Part No	Stocked?	
<b>Consumables</b>					
Optional	FT-0035	GAC Filter - 10" Carbon Activated Inline Filter - <b>Optional</b> <i>Filter Element PN FT-0038-WLT</i>	FT-0035-IL-WLT	Yes	
Optional	FT-0063	Carbon Block - 10" CBC 1-Micron Lead and Cyst Reduction Inline Filter - <b>Optional</b> <i>Filter Element PN FT-0064-WLT</i>	FT-0063-IL-WLT	Yes	
Optional	FT-0053	Sediment Filter - 10" Sediment 20 Micron Inline Filter <b>Optional</b> <i>Filter Element PN FT-0055-WLT</i>	FT-0053-IL-WLT	Yes	
<b>Recommended Spare Parts</b>					
1	12-1500	Solenoid Valve 1000 mm	PU-4016	Yes	
11.1	CU-0001	Solenoid Cushion	CU-0001	Yes	
1	12-1500	Solenoid Valve 500 mm <i>Recommend stocking 2 each per every 10 units purchased</i>	PU-4016	Yes	
1.1	CU-0001	Solenoid Cushion <i>Recommend stocking 2 each per every 10 units purchased</i>	CU-0001	Yes	
2	10-3048	Faucet Nipple – Blue with Screen <i>Recommend stocking 2 each per every 10 units purchased</i>	PL-1013	Yes	
3	12-8600	Silicon Button Key Mat Cold Only <i>Recommend stocking 5 each per every 10 units purchased</i>	PL-1100	Yes	
4	12-8610	Button Label - Cold Only <i>Recommend stocking 2 each per every 10 units purchased</i>	LP-7085	Yes	
5	12-8150	Drip Tray Grill – Charcoal <i>Recommend stocking 4 each per every 10 units purchased</i>	PL-1152	Yes	
6	12-8055	Drip Tray - Charcoal with Waterlogic Logo <i>Recommend stocking 4 each per every 10 units purchased</i>	PL-1156	Yes	

Not Shown	01-2076	ScaleKleen <i>Recommend stocking 2 each per every 10 units purchased</i>	NA	Yes	
<b>Remaining of Parts</b>					
7	NA	Faucet Cold only	PL-1012	No	
7.1	10-2600	Natural Faucet O-Ring – Silicon White	CT-2007	Yes	
8	12-8050	Front Upper Drip Tray Insert Panel	PL-1146	Yes	
9	12-8605	PCB Cover	PL-1180-CN	Yes	
10	12-8615	PCB for Cold Water	EN-6086	Yes	
11	NA	Front Upper Insert Panel - Charcoal	PL-0084-L00-CL	No	
12	12-8000	Silver Side Panel <b>Tower Only</b>	ST-8157	Yes	
13	12-8058	Side Panel Plastic Handle	PL-1123	Yes	
14	12-8052	Front Lower Panel <b>Tower Only</b>	PL-1148	Yes	
15	12-8053	Front Lower Insert Panel <b>Tower Only</b>	PL-1149	Yes	
16	12-8005	Filter Bracket <b>Tower Only</b>	ST-8138	Yes	

17	Purchase from John Guest	5/16" x 1/4" Reducing Elbow John Guest P/N PI211008S	PU-4007	No	
18	Purchase from John Guest	1/4" Union Elbow John Guest P/N P10308S	PU-4008	No	
19	10-3083	Unit Control Rubber Feet <b>Tower Only</b>	ST-8167CN	Yes	
20	12-8004	Bottom Tray <b>Tower Only</b>	ST-8137	Yes	
21	10-2200	Compressor (R134a 1/8HP) 120V/60Hz	CO-9001-A	Yes	
<b>CO-0020-L00-00 Compressor</b>					
34A.1	CO-0020-L00-00	LG Compressor 120V R134A CSB035LJCM	CO-0020-L00-00	Yes	
34A.2	CO-0019-L00-00	Compressor Capacitor	CO-0019-L00-00	Yes	
34A.3	ST-0216-L00-00	Capacitor Bracket	ST-0216-L00-00	Yes	
34A.4	CO-0017-L00-00	PTC Relay	CO-0017-L00-00	Yes	
34A.5	CO-0018-L00-00	Overload Protector	CO-0018-L00-00	Yes	
<b>CO-9001-A / 10-2200 Compressor</b>					
34B.1	10-2200	Compressor (R134a 1/8HP) 120V/60Hz	CO-9001-A	Yes	
34B.2	10-3003	Compressor Starter Relay	CO-9016	Yes	
34B.3	10-5018	Compressor Overload	CO-9015	Yes	
21.1	12-1001	Filter Dryer	CO-9008	Yes	

22	10-3067	Bulkhead Union ¼" x ¼" John Guest P/N PI1208S	PU-4028-A	Yes	
23	12-8102	Wire Condenser Tower Only	CO-9027	Special Order	
24	12-8002	Silver Back Panel <b>Tower Only</b>	ST-8135	No	
25	12-1101	Cold Tank Thermostat – included with Cold Tank	CT-2016	Yes	
26	10-4013	Power Line Noise Filter, ElectroMagnetic Interference filter (EMI)	EL-5016	Yes	
27	EL-5053	Fuse Holder and Fuse 120V / 15A with One Wire	EL-5053	Yes	
27.1	10-3013	Fuse 120V / 15A	EL-5010	Yes	
28	12-5600	Red Power and Compressor Switch	EL-5019-A	Yes	
29	12-8054	Top Cover <b>Tower Only</b>	PL-1150	Yes	
30	12-1100	4L Single Cold Tank Assembly Tower Only	CT-2017	Yes	
31	12-8003	Upper Shelf Tower Only	ST-8136-R2	Yes	
32	12-3117	Power Transformer 120V	EL-5003-A	Yes	
33	NA	Leak Detection PCB	EN-6111-A	No	

33.1	10-3017	PCB Stand-off Pin	EN-6059	Yes	
34	Purchase from John Guest	JG LLD PE Tube - Blue O.D.1/4"John Guest P/N PE-08-BI-1000F-B	PU-4031	No	
Not Shown	10-3007	Power Cord – 120V	EL-5001-B	Yes	