

## **SERVICE REQUIREMENTS**

**⚠ WARNING!** *Read and understand the contents of this manual before attempting to service WL200 Water Purification System. Failure to follow the instructions in this manual could result in death, serious personal injury, or severe property damage. Only trained and qualified technicians should attempt to install, maintain, or service Waterlogic Equipment.*

1. Visually inspect all electrical and water connections for signs of wear or damage.

**⚠ DANGER!** **HIGH VOLTAGE ELECTRICAL HAZARD.** *Unplug before inspection and service.*

2. Ensure there is adequate (minimum of 2") clearance around the unit and clean the condenser grill and compressor fan to provide efficient cooling system operation.

3. Sanitize the cold tank per instructions in the pre-installation procedures.

4. Clean and sanitize external surfaces of the unit. Use soap and water or chemicals that are compatible with ABS plastic and will not damage or degrade the product surfaces.

5. Empty and clean the drip tray on a regular basis.

6. Remove and clean the Faucet. Replace as needed.

**⚠ WARNING!** **SANITIZER MAY CONTAIN HAZARDOUS CHEMICALS.** *Use of proper personal protective equipment such as rubber gloves and eye protection is required.*

## LG COMPRESSOR UPGRADE

\*Parts List in this manual updated to reflect these changes.

**New LG Compressor 120V R134A 1/8HP CSB035LJCM with external start/run capacitor.**

### New LG Compressor with External Start/Run Capacitor



**External Capacitor**

New LG CSB035 LJCM Compressor

Repair/Replacement Parts for are not interchangeable with older/other compressors.

Older version of LG compressor is obsolete and no longer available.

### **New LG CSB035LJCM 120V R134A 1/8HP Compressor Repair Parts**

Part # CO-0017-L00-00	LG Compressor 120V CSB035LJCM-PTC Relay
Part # CO-0018-L00-00	LG Compressor 120V CSB035LJCM-Overload Protector
Part # CO-0019-L00-00	LG Compressor 120V CSB035LJCM-Capacitor

## ADJUSTING COLD SET POINT

Cold Water Temperature – Factory Set Point is 41°F (5°C) and can be adjusted to 34°F - 54°F (1.1°C to 12.2°C)

The cold set point can be adjusted by accessing the cold thermostat adjustment screw under the decal at the rear of the unit.



Remove the red portion of the Cold Tank Temperature label to access the adjustment screw.

The factory set point is ~41°F and is indicated by the dot on sheet metal.



Turning the adjustment screw clockwise to lower the set point temperature.

Do not adjust past the “Max Cold” position at 3:00 position to avoid freezing the cold tank.



Turning the adjustment screw counter-clockwise to raise the set point temperature.

## REPLACEMENT COMPONENTS (CONSUMABLES)

Component	WLCP Part No.	Frequency of Replacement
GAC Filter - 10" Carbon Activated Inline Filter – <i>Optional</i> <i>*Filter Element PN FT-0038-WLT</i>	FT-0035	Every 6-months or as required. Local water conditions will determine proper filter type and maintenance schedule. FT-0035-IL-WLT
Carbon Block - 10" CBC 1 Micron Lead and Cyst Reduction Inline Filter – <i>Optional</i> <i>*Filter Element PN FT-0064-WLT</i>	FT-0063	Every 6-months or as required. Local water conditions will determine proper filter type and maintenance schedule. FT-0063-IL-WLT
Sediment Filter - 10" Sediment 20 Micron Inline Filter – <i>Optional</i> <i>*Filter Element PN FT-0055-WLT</i>	FT-0053	Every 6-months or as required. Local water conditions will determine proper filter type and maintenance schedule. FT-0053-IL-WLT

Replacement parts can be obtained from *Waterlogic* or an *Authorized Waterlogic Dealer*. See Parts Layouts, Drawings, and Lists for additional repair parts.

### Surface Cleaning

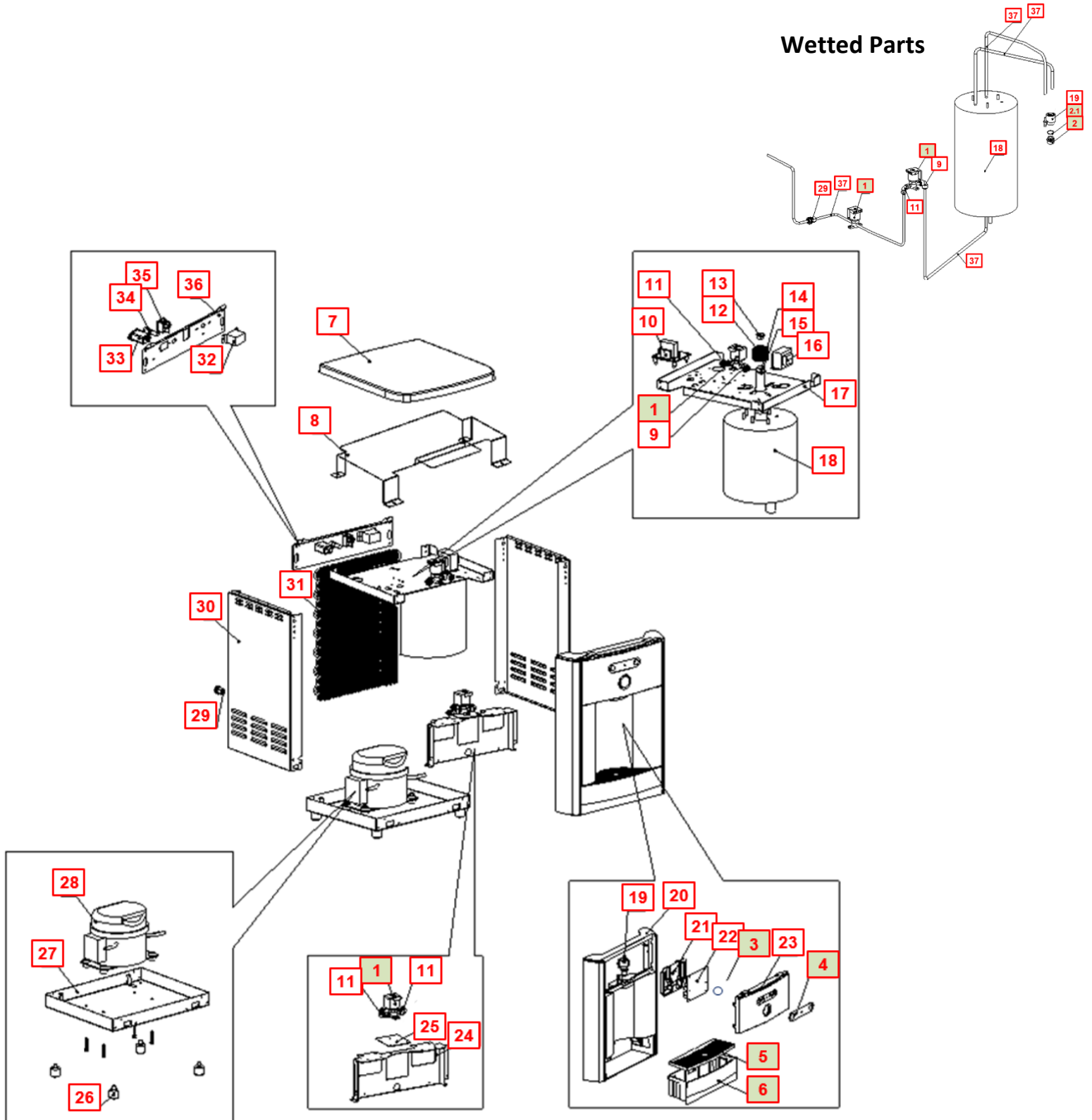
Clean on a regular basis with damp lint free cloth. Never use harsh chemicals (alcohol or acid based) or abrasive agents on any part of the product to avoid damage. A mild cleaner such as Simple Green or equivalent is recommended.

## DISPOSAL

### End of Life

At the **end of this product's life**, ensure that it is disposed of in an environmentally friendly manner which is fully compliant **with all Federal/State/Local Requirements and Guidelines**. Do not dispose of this appliance with normal household or business waste.

## WL200 COUNTER TOP DRAWINGS with PART NUMBERS



No	WLCP Part No.	Description	Part No	Stocked?	
<b>Consumables</b>					
Optional	FT-0035	GAC Filter - 10" Carbon Activated Inline Filter - <b>Optional</b> <i>Filter Element PN FT-0038-WLT</i>	FT-0035-IL-WLT	Yes	
Optional	FT-0063	Carbon Block - 10" CBC 1-Micron Lead and Cyst Reduction Inline Filter - <b>Optional</b> <i>Filter Element PN FT-0064-WLT</i>	FT-0063-IL-WLT	Yes	
Optional	FT-0053	Sediment Filter - 10" Sediment 20 Micron Inline Filter <b>Optional</b> <i>Filter Element PN FT-0055-WLT</i>	FT-0053-IL-WLT	Yes	
<b>Recommended Spare Parts</b>					
1	12-1500	Solenoid Valve 500 mm <i>Recommend stocking 2 each per every 10 units purchased</i>	PU-4016	Yes	
1.1	CU-0001	Solenoid Cushion <i>Recommend stocking 2 each per every 10 units purchased</i>	CU-0001	Yes	
2	10-3048	Faucet Nipple – Blue with Screen <i>Recommend stocking 2 each per every 10 units purchased</i>	PL-1013	Yes	
3	12-8600	Silicon Button Key Mat Cold Only <i>Recommend stocking 5 each per every 10 units purchased</i>	PL-1100	Yes	
4	12-8610	Button Label - Cold Only <i>Recommend stocking 2 each per every 10 units purchased</i>	LP-7085	Yes	
5	12-8150	Drip Tray Grill – Charcoal <i>Recommend stocking 4 each per every 10 units purchased</i>	PL-1152	Yes	
6	12-8055	Drip Tray - Charcoal with Waterlogic Logo <i>Recommend stocking 4 each per every 10 units purchased</i>	PL-1156	Yes	
Not Shown	01-2076	ScaleKleen <i>Recommend stocking 2 each per every 10 units purchased</i>	NA	Yes	

Remaining of Parts					
7	12-8060	Flat Top Cover - Charcoal with Texture <b>Counter Top Only</b>	PL-1249-CN	Yes	
8	ST-0049-L00-00	High Voltage Metal Cover (ETL-Certification) <b>Counter Top Only</b>	ST-0049-L00-00	Yes	
9	Purchase from John Guest	5/16" x 1/4" Reducing Elbow John Guest P/N PI211008S	PU-4007	No	
10	NA	Leak Detection PCB	EN-6111-A	No	
10.1	10-3017	PCB Stand-off Pin	EN-6059	Yes	
11	Purchase from John Guest	1/4" Union Elbow John Guest P/N P10308S	PU-4008	No	
12	12-1210	UV Lamp Retaining Threaded Nut <b>Counter Top Only</b>	PL-1128	Yes	
13	10-8085	UV Lamp Fixing Rubber (Silicon) <b>Counter Top Only</b>	CT-2001-B	Yes	
14	NA	Quartz Sleeve (100mm) <b>Counter Top Only</b>	CT-2062-CN	No	
15	10-2500	Black O-Ring for Quartz Sleeve <b>Counter Top Only</b>	CT-2006	Yes	
16	12-3117	Power Transformer 120V	EL-5003-A	Yes	
17	12-3165	Upper Shelf <b>Counter Top Only</b>	ST-8150-B	Yes	





18	12-3110	2L UV Cold Tank Assembly <b>Counter Top Only</b>	CT-2060	Yes	
19	NA	Faucet - Cold only	PL-1012	Yes	
19.1	10-2600	Natural Faucet O-Ring – Silicon White	CT-2007	Yes	
20	12-8050	Front Upper Drip Tray Insert Panel	PL-1146	Yes	
21	12-8605	PCB Cover	PL-1180-CN	Yes	
22	12-8615	Main PCB	EN-6086	Yes	
23	NA	Front Upper Insert Panel - Charcoal	PL-0084-L00-CL	No	
24	12-3175	Filter Bracket <b>Counter Top Only</b>	ST-8152	Yes	
25	12-3195	Leak System Inlet Solenoid Bracket	ST-8244	Yes	
26	12-3150	Unit Rubber Feet <b>Counter Top Only</b>	PL-1251-CN	Yes	
27	12-3170	Bottom Tray <b>Counter Top Only</b>	ST-8151	Yes	



Verify compressor in machine before ordering parts as the Compressor P/N CO-0020-L00-00 and 10-2200 (CO-0001A) and related parts are not interchangeable.

### CO-0020-L00-00 Compressor

34A.1	CO-0020-L00-00	LG Compressor 120V R134A CSB035LJCM	CO-0020-L00-00	Yes	
34A.2	CO-0019-L00-00	Compressor Capacitor	CO-0019-L00-00	Yes	
34A.3	ST-0216-L00-00	Capacitor Bracket	ST-0216-L00-00	Yes	
34A.4	CO-0017-L00-00	PTC Relay	CO-0017-L00-00	Yes	
34A.5	CO-0018-L00-00	Overload Protector	CO-0018-L00-00	Yes	

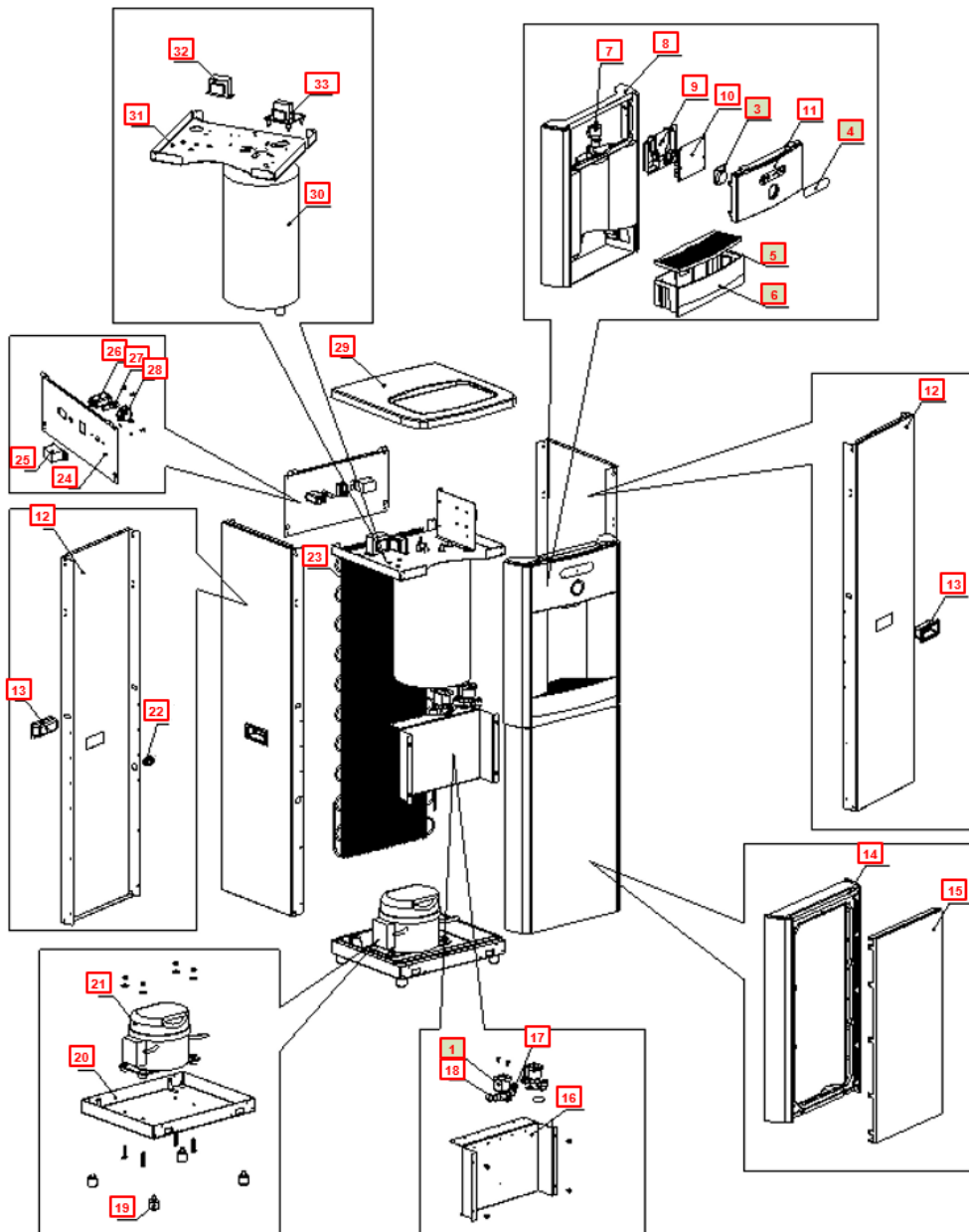
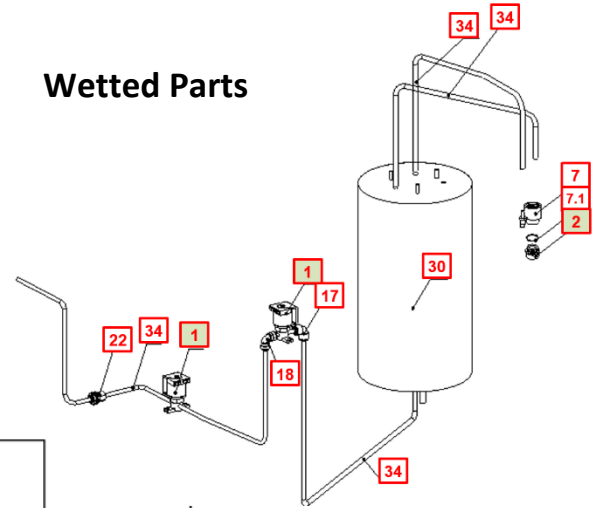
### CO-9001-A / 10-2200 Compressor

34B.1	10-2200	Compressor (R134a 1/8HP) 120V/60Hz	CO-9001-A	Yes	
34B.2	10-3003	Compressor Starter Relay	CO-9016	Yes	
34B.3	10-5018	Compressor Overload	CO-9015	Yes	
28.1	12-1001	Filter Dryer	CO-9008	Yes	
29	10-3067	Bulkhead Union 1/4" x 1/4" John Guest P/N PI1208S	PU-4028	Yes	
30	12-8062	Side Panel <b>Counter Top Only</b>	ST-8245	Yes	
31	12-3100	Wire Condenser <b>Counter Top Only</b>	CO-9031	Special Order	

32	12-1101	Cold Tank Thermostat – included with Cold Tank	CT-2016	Yes	
33	10-4013	Power Line Noise Filter, ElectroMagnetic Interference filter (EMI)	EL-5016	Yes	
34	EL-5053	Fuse Holder and Fuse 120V / 15A with One Wire	EL-5053	Yes	
34.1	10-3013	Fuse 120V / 15A	EL-5010	Yes	
35	12-5600	Red Power and Compressor Switch	EL-5019-A	Yes	
36	12-8061	Silver Back Panel <b>Counter Top Only</b>	ST-8216	Yes	
37	Purchase from John Guest	JG LLD PE Tube - Blue O.D.1/4"John Guest P/N PE-08-BI-1000F-B	PU-4031	No	
Not Shown	10-3007	Power Cord – 120V	EL-5001-B	Yes	

## WL200 TOWER DRAWINGS with PART NUMBERS

### Wetted Parts






No	WLCP Part No.	Description	Part No	Stocked?	
<b>Consumables</b>					
Optional	FT-0035	GAC Filter - 10" Carbon Activated Inline Filter - <b>Optional</b> <i>Filter Element PN FT-0038-WLT</i>	FT-0035-IL-WLT	Yes	
Optional	FT-0063	Carbon Block - 10" CBC 1-Micron Lead and Cyst Reduction Inline Filter - <b>Optional</b> <i>Filter Element PN FT-0064-WLT</i>	FT-0063-IL-WLT	Yes	
Optional	FT-0053	Sediment Filter - 10" Sediment 20 Micron Inline Filter <b>Optional</b> <i>Filter Element PN FT-0055-WLT</i>	FT-0053-IL-WLT	Yes	
<b>Recommended Spare Parts</b>					
1	12-1500	Solenoid Valve 1000 mm	PU-4016	Yes	
11.1	CU-0001	Solenoid Cushion	CU-0001	Yes	
1	12-1500	Solenoid Valve 500 mm <i>Recommend stocking 2 each per every 10 units purchased</i>	PU-4016	Yes	
1.1	CU-0001	Solenoid Cushion <i>Recommend stocking 2 each per every 10 units purchased</i>	CU-0001	Yes	
2	10-3048	Faucet Nipple – Blue with Screen <i>Recommend stocking 2 each per every 10 units purchased</i>	PL-1013	Yes	
3	12-8600	Silicon Button Key Mat Cold Only <i>Recommend stocking 5 each per every 10 units purchased</i>	PL-1100	Yes	
4	12-8610	Button Label - Cold Only <i>Recommend stocking 2 each per every 10 units purchased</i>	LP-7085	Yes	
5	12-8150	Drip Tray Grill – Charcoal <i>Recommend stocking 4 each per every 10 units purchased</i>	PL-1152	Yes	
6	12-8055	Drip Tray - Charcoal with Waterlogic Logo <i>Recommend stocking 4 each per every 10 units purchased</i>	PL-1156	Yes	

Not Shown	01-2076	ScaleKleen <i>Recommend stocking 2 each per every 10 units purchased</i>	NA	Yes	
<b>Remaining of Parts</b>					
7	NA	Faucet Cold only	PL-1012	No	
7.1	10-2600	Natural Faucet O-Ring – Silicon White	CT-2007	Yes	
8	12-8050	Front Upper Drip Tray Insert Panel	PL-1146	Yes	
9	12-8605	PCB Cover	PL-1180-CN	Yes	
10	12-8615	PCB for Cold Water	EN-6086	Yes	
11	NA	Front Upper Insert Panel - Charcoal	PL-0084-L00-CL	No	
12	12-8000	Silver Side Panel <b>Tower Only</b>	ST-8157	Yes	
13	12-8058	Side Panel Plastic Handle	PL-1123	Yes	
14	12-8052	Front Lower Panel <b>Tower Only</b>	PL-1148	Yes	
15	12-8053	Front Lower Insert Panel <b>Tower Only</b>	PL-1149	Yes	
16	12-8005	Filter Bracket <b>Tower Only</b>	ST-8138	Yes	

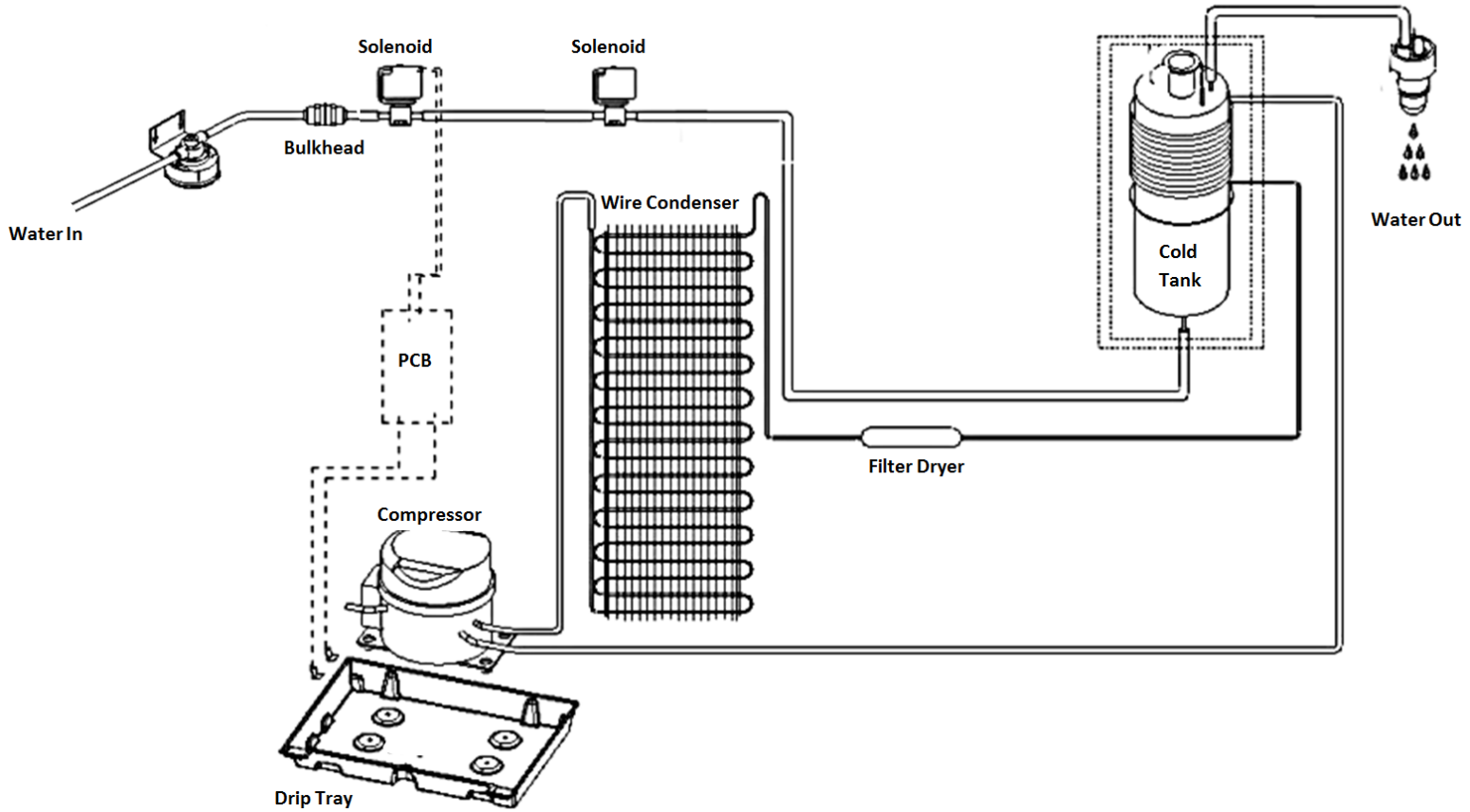
17	Purchase from John Guest	5/16" x 1/4" Reducing Elbow John Guest P/N PI211008S	PU-4007	No	
18	Purchase from John Guest	1/4" Union Elbow John Guest P/N P10308S	PU-4008	No	
19	10-3083	Unit Control Rubber Feet <b>Tower Only</b>	ST-8167CN	Yes	
20	12-8004	Bottom Tray <b>Tower Only</b>	ST-8137	Yes	
21	10-2200	Compressor (R134a 1/8HP) 120V/60Hz	CO-9001-A	Yes	
<b>CO-0020-L00-00 Compressor</b>					
34A.1	CO-0020-L00-00	LG Compressor 120V R134A CSB035LJCM	CO-0020-L00-00	Yes	
34A.2	CO-0019-L00-00	Compressor Capacitor	CO-0019-L00-00	Yes	
34A.3	ST-0216-L00-00	Capacitor Bracket	ST-0216-L00-00	Yes	
34A.4	CO-0017-L00-00	PTC Relay	CO-0017-L00-00	Yes	
34A.5	CO-0018-L00-00	Overload Protector	CO-0018-L00-00	Yes	
<b>CO-9001-A / 10-2200 Compressor</b>					
34B.1	10-2200	Compressor (R134a 1/8HP) 120V/60Hz	CO-9001-A	Yes	
34B.2	10-3003	Compressor Starter Relay	CO-9016	Yes	
34B.3	10-5018	Compressor Overload	CO-9015	Yes	
21.1	12-1001	Filter Dryer	CO-9008	Yes	

22	10-3067	Bulkhead Union ¼" x ¼" John Guest P/N PI1208S	PU-4028-A	Yes	
23	12-8102	Wire Condenser Tower Only	CO-9027	Special Order	
24	12-8002	Silver Back Panel <b>Tower Only</b>	ST-8135	No	
25	12-1101	Cold Tank Thermostat – included with Cold Tank	CT-2016	Yes	
26	10-4013	Power Line Noise Filter, ElectroMagnetic Interference filter (EMI)	EL-5016	Yes	
27	EL-5053	Fuse Holder and Fuse 120V / 15A with One Wire	EL-5053	Yes	
27.1	10-3013	Fuse 120V / 15A	EL-5010	Yes	
28	12-5600	Red Power and Compressor Switch	EL-5019-A	Yes	
29	12-8054	Top Cover <b>Tower Only</b>	PL-1150	Yes	
30	12-1100	4L Single Cold Tank Assembly Tower Only	CT-2017	Yes	
31	12-8003	Upper Shelf Tower Only	ST-8136-R2	Yes	
32	12-3117	Power Transformer 120V	EL-5003-A	Yes	
33	NA	Leak Detection PCB	EN-6111-A	No	

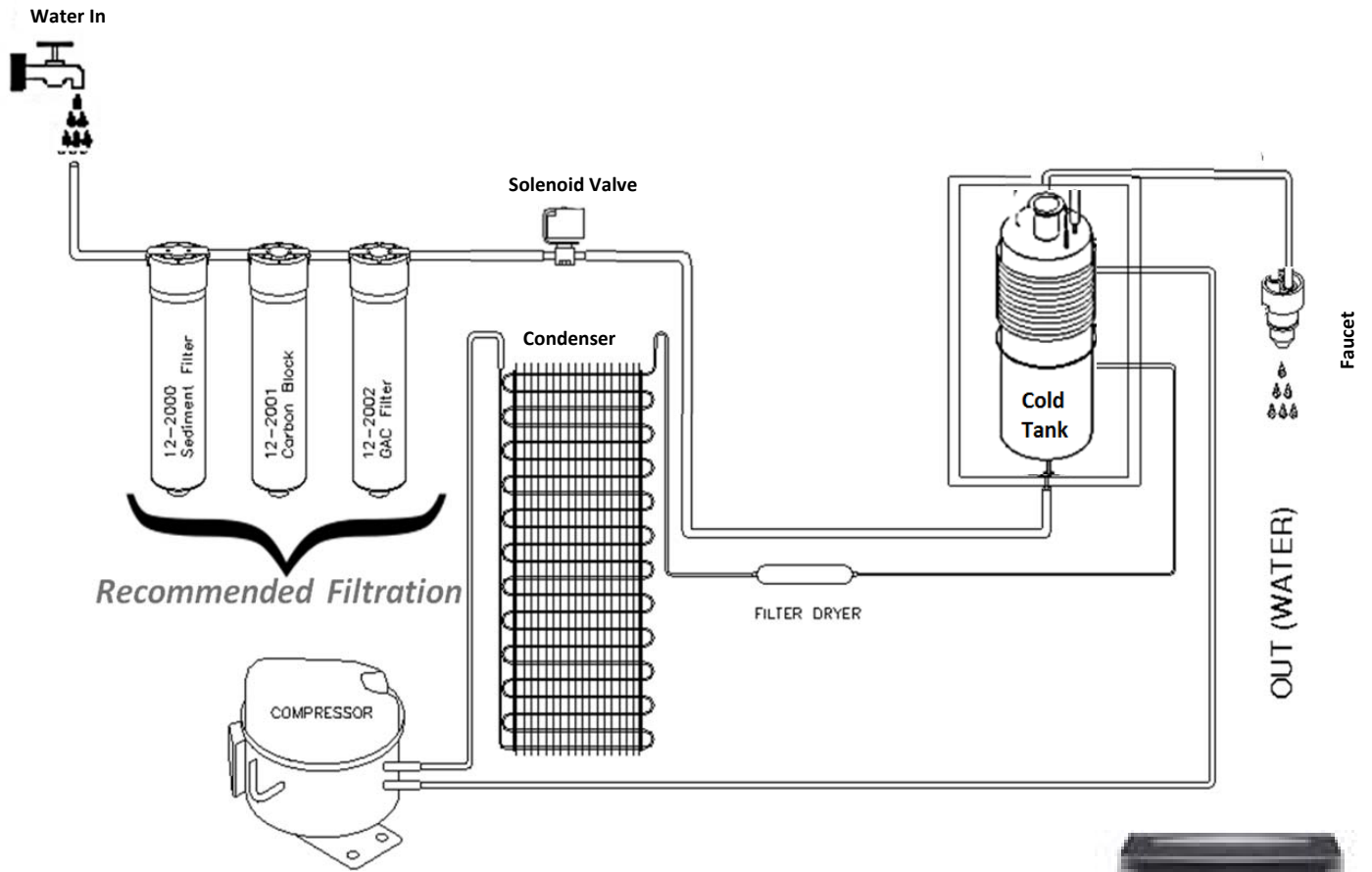


33.1	10-3017	PCB Stand-off Pin	EN-6059	Yes	
34	Purchase from John Guest	JG LLD PE Tube - Blue O.D.1/4"John Guest P/N PE-08-BI-1000F-B	PU-4031	No	
Not Shown	10-3007	Power Cord – 120V	EL-5001-B	Yes	

## WL200 COUNTER TOP WATER FLOW DIAGRAM

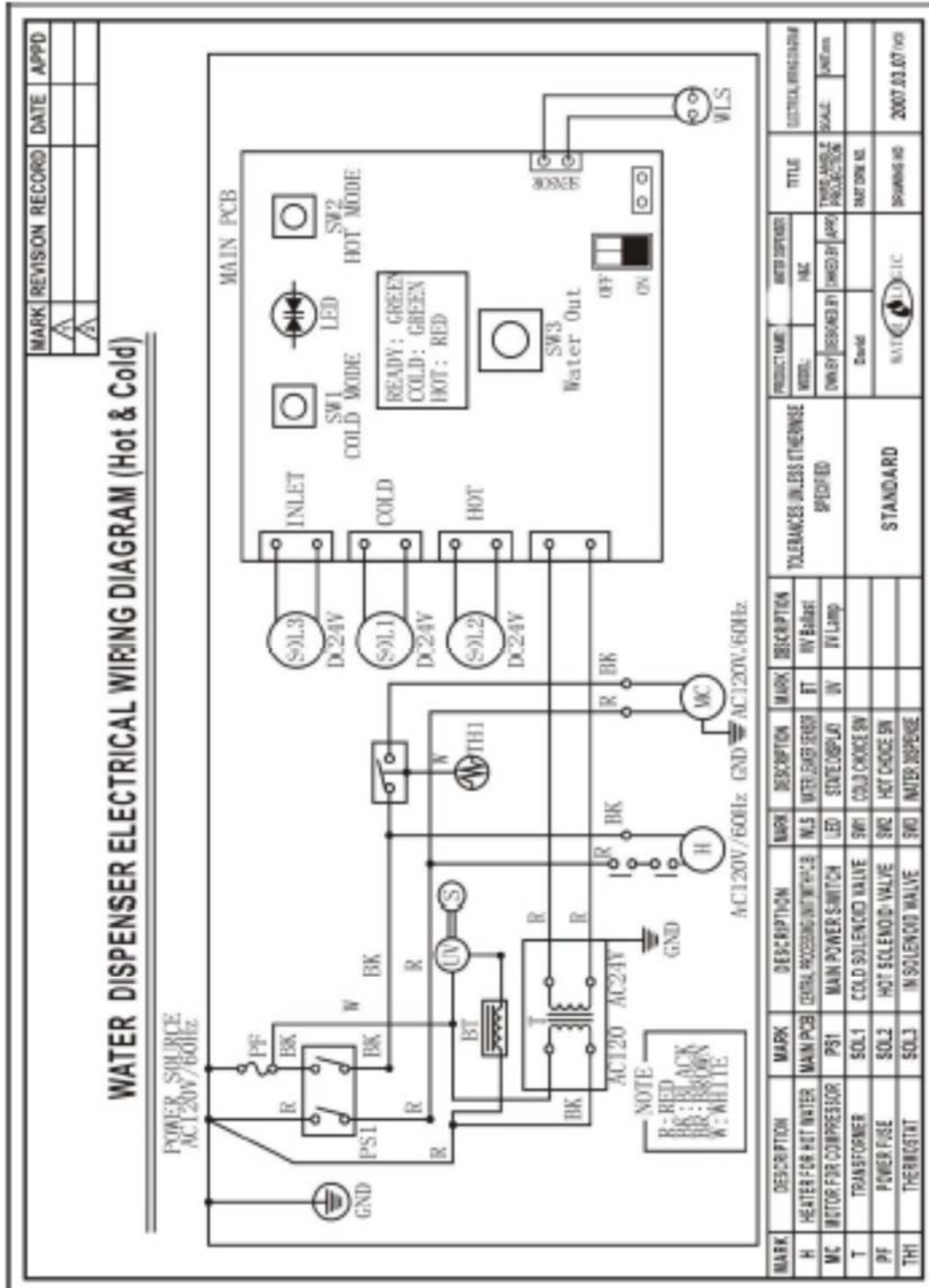


## WL200 TOWER WATER FLOW DIAGRAM



## WL200 COUNTER TOP ELECTRICAL DIAGRAM

**⚠ DANGER!** HIGH VOLTAGE ELECTRICAL HAZARD. PCB (Printed Circuit Board) contains High Voltage. Only trained and qualified technicians should attempt live testing.



## WL200 TOWER ELECTRICAL DIAGRAM

**⚠ DANGER!** HIGH VOLTAGE ELECTRICAL HAZARD. PCB (Printed Circuit Board) contains High Voltage. Only trained and qualified technicians should attempt live testing.

