

## REPLACEMENT COMPONENTS - CONSUMABLES

Component	WLCP PN	Frequency of Replacement
15W X UV Lamp Assembly	12-8310	Every 12 months, or as required  Factory Part No CT-2085-IA0-00
Hot Tank 120V/500W - 1.6L with Thermistor	10-4029	Replace every 3 to 5 years depending on usage.  Factory Part No HT-3024
Sediment Filter - 10" 20 Micron Inline Filter	FT-0053-IL containing FT-0055 Filter Element	Every 12 months or every 1,250 gallons. Factory Part No FT-0053-IL Assembly containing FT-0055-WLT Filter Element
1-micron 10" Inline CBC Filter for CTO, Lead, Cyst and Asbestos Reduction (Carbon Block) NSF 53 Required for NSF Certification	FT-0063-IL containing FT-0064 Filter Element	Every 12 months or every 1,250 gallons. Factory Part No FT-0063-IL Assembly containing FT-0064-WLT Filter Element
10-micron 10" Inline GAC Filter for Taste and Odor Reduction (Grannual Activated Carbon) NSF 42 Required for NSF Certification	FT-0035-IL containing FT-0038 Filter Element	Every 12 months or every 1,250 gallons. Factory Part No FT-0035-IL Assembly containing FT-0038-WLT Filter Element

\* One pre-installed. One required for NSF-42 / NSF-53 Certification.

**⚠ CAUTION!** Use only Waterlogic Replacement parts that can be obtained from *Waterlogic* or an *Authorized Waterlogic Dealer*, failure to do so will void the Warranty.

See **Installation and Service Manual** for additional information.

### Hot Tank Service

Hot Tanks (with controls) must be replaced at least every 3-5 years depending on usage. Descaling hot tank may be required on a regular basis depending upon filtration and local water conditions. See Installation and Service Manual for further details.

### Surface Cleaning

Clean on a regular basis with damp lint free cloth. Never use harsh chemicals (alcohol or acid based) or abrasive agents on any part of the product to avoid damage. A mild cleaner such as Simple Green or equivalent is recommended.

## DISPOSAL

### End of Life

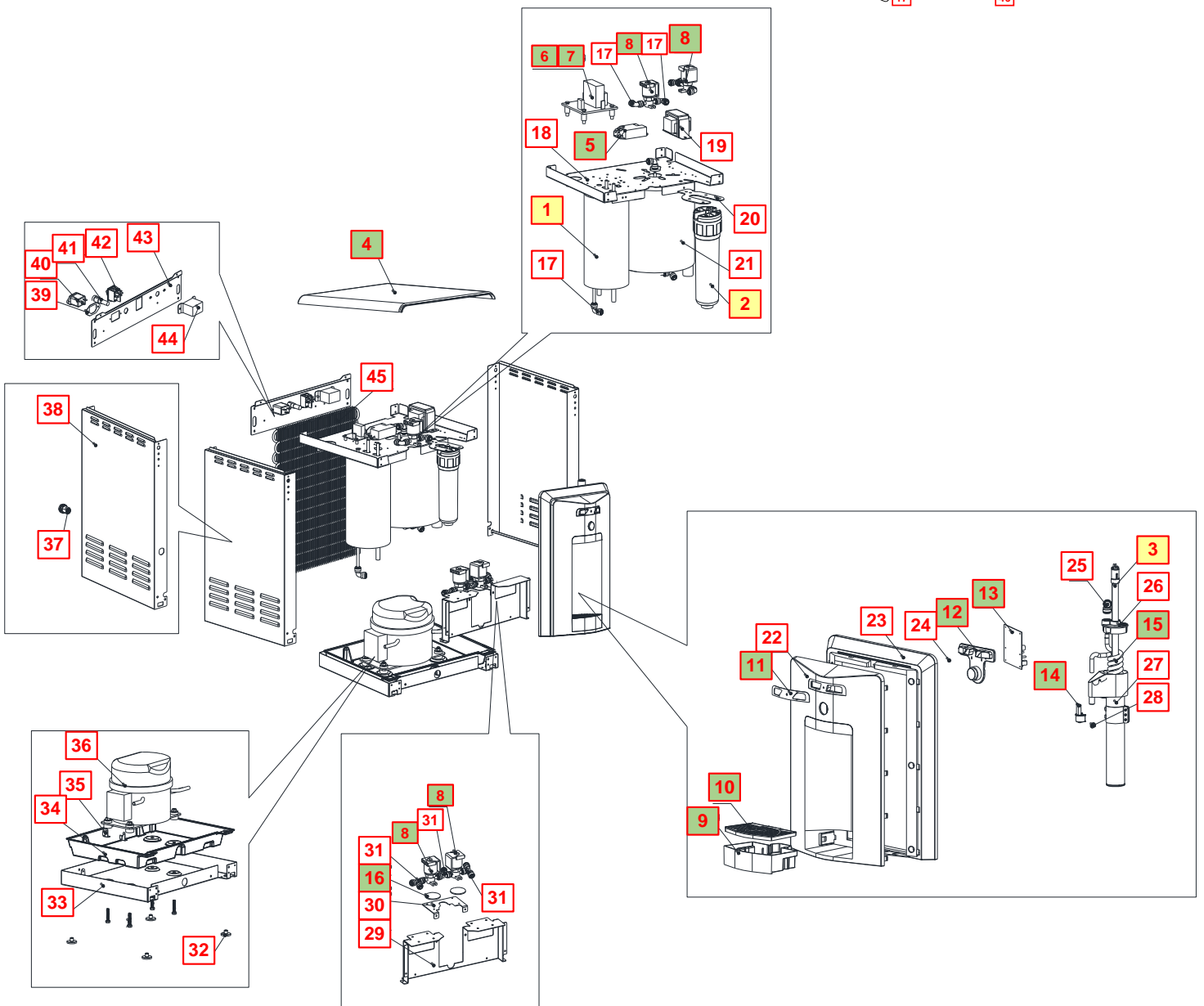
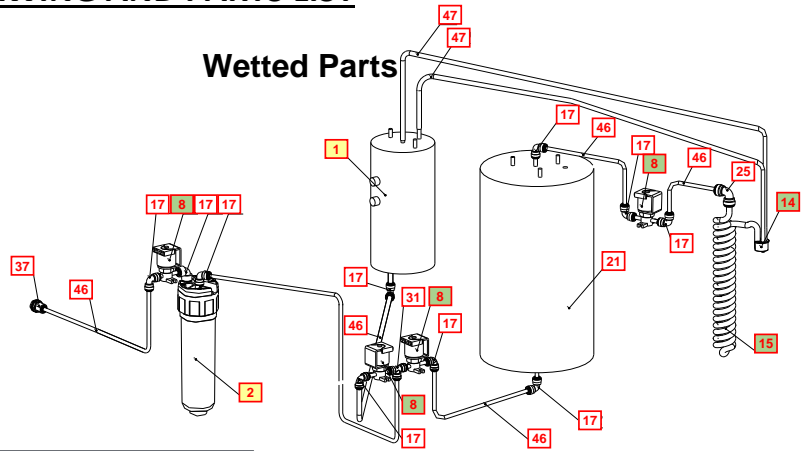
At the **end of this product's life**, ensure that it is disposed of in an environmentally friendly manner which is fully compliant **with all Federal/State/Local Requirements and Guidelines**. Do not dispose of this appliance with normal household or business waste.

## WL2MFL COUNTER TOP LAYOUT DRAWING AND PARTS LIST

Yellow = Consumables

Green = Recommended spare parts

### Wetted Parts







No	WLUSA Part Number	Description	Factory Part Number	Stocked?	
<b>Consumables</b>					
1	10-4029	Hot Tank 120V/500W - 1.6L with Thermistor	HT-3024	Yes	
2	FT-0063	1-micron 10" Inline CBC Filter for CTO, Lead, Cyst and Asbestos Reduction (Carbon Block) - Filter Element FT-0064 for replacement cartridge	FT-0063-IL-WLT	Yes	
3	12-8310	15W X UV Lamp Assembly	CT-2085-IA0-00	Yes	
Not shown	01-2076	Scale Kleen	NA	Yes	
<b>Recommended Spare Parts</b>					
1.1	12-1360	Overload with Manual reset - 221°F (105°C) <i>Recommend stocking 2 each per 10 units purchased</i>	HT-3012	Yes	
1.2	12-6900	Overload Metal Cover <i>Recommend stocking 2 each per 10 units purchased</i>	ST-8290	Yes	
4	PL-0191-L00-BL	Black Top Cover <i>Recommend stocking 2 each per 10 units purchased</i>	PL-0191-L00-BL	Yes	
4.1	ST-0049-L00-00	High Voltage Metal Cover (ETL Certification) – Under Top Cover <i>Recommend stocking 2 each per 10 units purchased</i>	ST-0049-L00-00	Yes	
5	EN-0008-LA1-00	13W / 15W 120V / 60Hz Electronic FX Ballast <i>Recommend stocking 2 each per 10 units purchased</i>	EN-0008-LA1-00	Yes	
6	EN-6134	Main PCB <i>Recommend stocking 2 each per 10 units purchased</i>	EN-6134	Yes	
7	10-3017	Plastic PCB Support <i>Recommend stocking 2 each per 10 units purchased</i>	EN-6059	Yes	
8	PU-4017	Solenoid Valve DC24V 500mm <i>Recommend stocking 2 each per 10 units purchased</i>	PU-4017	Yes	
9	PL-0194-L00-BL	Black Drip Tray Body <i>Recommend stocking 4 each per 10 units purchased</i>	PL-0194-L00-BL	Yes	
10	PL-0195-L00-BL	Black Drip Tray Grill <i>Recommend stocking 4 each per 10 units purchased</i>	PL-01 95-L00-BL	Yes	
11	LP-0422-L00-00	Hot and Cold User Interface Label <i>Recommend stocking 2 each per 10 units purchased</i>	LP-0422-L00-00	Yes	


12	PL-0199-L00-00	Hot and Cold Dispense Silicon Button Mat <i>Recommend stocking 2 each per 10 units purchased</i>	PL-0199-L00-00	Yes	
13	EN-0078-L00-00	Display PCB <i>Recommend stocking 2 each per 10 units purchased</i>	EN-0078-L00-00	Yes	
14	12-8370	Hot Water Faucet <i>Recommend stocking 2 each per 10 units purchased</i>	PL-1351	Yes	
14.1	10-3048	Faucet Nipple – Blue with Screen <i>Recommend stocking 2 each per 10 units purchased</i>	PL-1013	Yes	
14.2	10-2600	Silicon Faucet O-ring <i>Recommend stocking 2 each per 10 units purchased</i>	CT-2007	Yes	
15	12-8305	Quartz Spiral UV Faucet <i>Recommend stocking 2 each per 10 units purchased</i>	FU-0007	Yes	
16	CU-0001	Solenoid Cushion <i>Recommend stocking 2 each per 10 units purchased</i>	CU-0001	Yes	
<b>Remainder of Parts</b>					
1.2	NA	Hot Tank Thermistor	HT-3002	No	
17	Purchase from John Guest	JG Equal Elbow Connector 1/4" John Guest P/N PI0308S	PU-4008	No	
18	NA	Upper Shelf	ST-0198-L00-00	No	
19	12-8375	Transformer 1.6A / 120 V	EL-5147	Yes	
20	NA	Inline Filter Bracket	ST-0200-L00-00	No	
21	NA	Cold Tank Assembly - 2Liter	CT-2060-B	No	
22	NA	Black Front Top Panel	PL-0202-L00-BL	No	
23	NA	Silver Front Top Panel Trim	PL-0192-L00-SI	No	
24	NA	LED Light Pipe	EL-0148-L00-00	No	

25	Purchase from John Guest	JG 3/8" x 1/4" Reducing Elbow (PI211208S)	PU-4137	No	
26	12-8320	Firewall UV Lamp Seal	CT-2088	Yes	
27	TBD	Firewall Housing	FW-0027-100-00	Yes	
28	AK-0064	UVC Sensor Assembly	AK-0064	Yes	
29	NA	Filter Bracket	ST-0199-L00-00	No	
30	NA	Firewall Bracket	ST-8297	No	
31	Purchase from John Guest	JG Equal Tee Connector 1/4" (PI0208S)	PU-4011	No	
32	12-3150	Unit Rubber Feet	PL-1251-CN	No	
33	12-3170	Bottom Tray	ST-8151	Yes	
34	NA	Leak Tray	PL-0198-L00-00	No	
35	12-3180	Leak Containment Tray Clip (sensor 0.5mm)	ST-8207-CN	No	

**Verify compressor in machine before ordering parts as the Compressor P/N CO-0020-L00-00 and CO-0044-P00-00-LIN and related parts are not interchangeable.**

### **CO-0020-L00-00 Compressor (WL2MFL-FX)**

36A.1	CO-0020-L00-00	LG Compressor 120V R134A CSB035LJCM	CO-0020-L00-00	Yes	
36A.2	CO-0019-L00-00	Compressor Capacitor	CO-0019-L00-00	Yes	
36A.3	ST-0216-L00-00	Capacitor Bracket	ST-0216-L00-00	Yes	
36A.4	CO-0017-L00-00	PTC Relay	CO-0017-L00-00	Yes	
36A.5	CO-0018-L00-00	Overload Protector	CO-0018-L00-00	Yes	

CO-0044-P00-00-LIN Compressor (WL2MFL-FZ)					
36B.1	CO-0044-P00-00-LIN	Samsung Compressor (R134a 1/8HP) 120V/60Hz	CO-0044-P00-00-LIN	Yes	
36B.2		PTC & Overload Relay Combo		Yes	
36.1	12-1001	Filter Dryer	CO-9008	Yes	
37	10-3067	Bulkhead Union 1/4" x 1/4" John Guest P/N PI1208S	PU-4028	Yes	
38	ST-0205-L00-00	Side Panel	ST-0205-L00-00	Yes	
39	19-1015	Gasket for Power Socket	ST-8052	Yes	
40	19-1090	Power Line Noise Filter, Electromagnetic Interference filter (EMI)	EL-5029	Yes	
41	10-3014	Fuse Holder and Fuse 120V / 15A with One Wire	EL-5053	Yes	
41.1	10-3013	Fuse 120V / 15A	EL-5010	Yes	
42	12-5600	Red Heater and Compressor Switch	EL-5019-A	Yes	
43	ST-0204-L00-00	Back Panel	ST-0204-L00-00	No	
44	19-1069	Cold Tank Thermostat 3°C (37.4°F)	CT-2070-A	Yes	
44.1	LP-0326	Cold Thermostat Cover Label	LP-0326-L00-00	Yes	
45	12-3100	Wire Condenser	CO-9031	No	
46	Purchase from John Guest	JG LLD PE Tube - Blue O.D.1/4" John Guest P/N PE-08-BI-1000F-B	PU-4031	No	
47	10-7040	Silicon Tube 5/16" for hot water	PL-4064-L00-00	Yes	
Not Shown	10-3007	Power Cord 120V – 18240mm	EL-5001-B	Yes	