

SERVICE REQUIREMENTS

⚠ WARNING! *Read and understand the contents of this manual before attempting to service WL2FL Water Treatment System. Failure to follow the instructions in this manual could result in death, serious personal injury, or severe property damage. Only trained and qualified technicians should attempt to install, maintain, or service Waterlogic Equipment.*

1. Visually inspect all electrical and water connections for signs of wear or damage.

⚠ DANGER! ***HIGH VOLTAGE ELECTRICAL HAZARD.** Unplug before inspection and service.*

2. **Waterlogic** recommends changing the UV Lamp every 12 months.

⚠ WARNING! ***UV-C EMITTER (UV LAMP).** This appliance contains a UV-C emitter (UV Lamp). UV-C radiation may, even in little doses, cause harm to the eyes and skin. Unintended use or damage to the housing may result in the escape of dangerous UV-C radiation. Never operate the UV-C emitter if damaged or removed from enclosure. Do not touch or look directly into the faucet.*

⚠ CAUTION! ***UV LAMPS ARE HAZARDOUS.** Lamps are considered Hazardous Waste and must be disposed of accordingly. Refer to Product MSDS sheet for details.*

3. Clean the Spiral Quartz Spiral that surrounds the UV Lamp with a non-abrasive cloth, descaling solution, or ultrasonic bath if needed when changing UV Lamps.

⚠ CAUTION! ***UV SYSTEM IS FRAGILE.** Never handle the UV lamp or Quartz Spiral with bare hands. UV Lamp and quartz spiral must be free of oils and contaminants to ensure proper operation. Use a soft non-abrasive cloth to clean.*

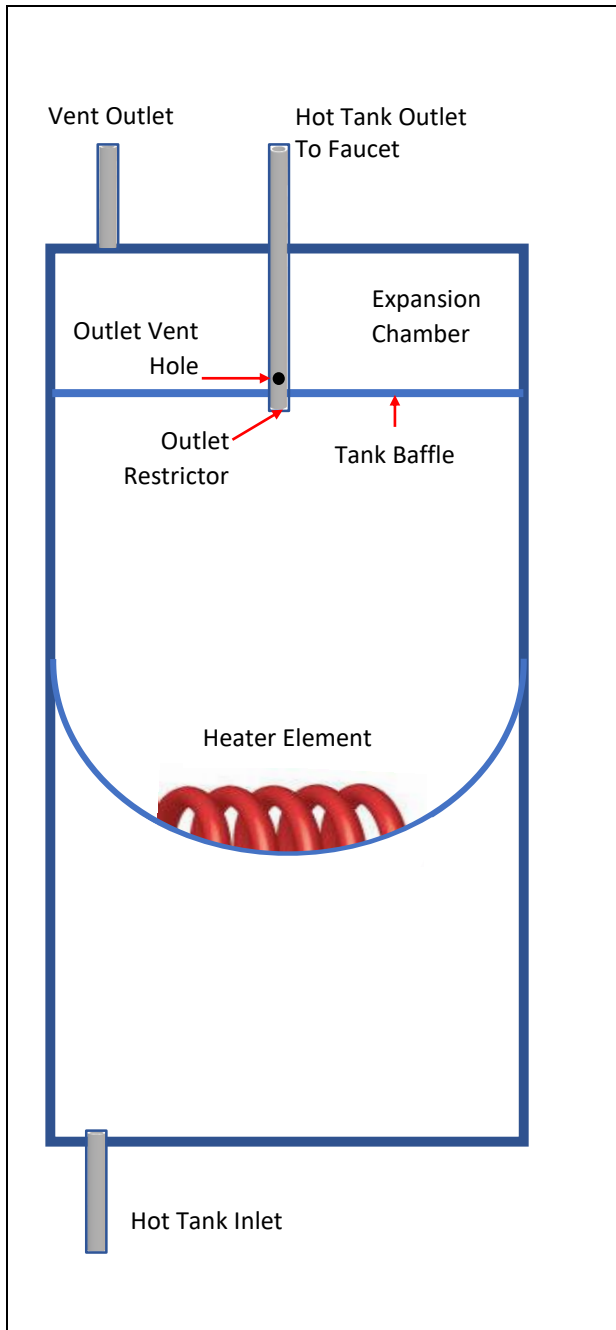
4. Sanitize the Cold Tank per instructions in the pre-installation procedures.

5. Clean and sanitize external surfaces of the unit. Use soap and water or chemicals that are compatible with ABS plastic and will not damage or degrade the product surfaces.

6. Remove and clean the Faucet. Replace as needed.

⚠ WARNING! ***SANITIZER MAY CONTAIN HAZARDOUS CHEMICALS.** Use of proper personal protective equipment such as rubber gloves and eye protection is required.*

HOT TANK PRINCIPLES OF OPERATION



All **Waterlogic** Hot Tanks have a built-in Vent or Expansion Chamber in the top of the tank except for WL270 (GF) units.

The Vent Chamber allows for expansion of the water when it is heated.

The chambers are separated by a welded-in tank baffle.

Water always flows into the bottom of the tank and out the top to the faucet.

The hot tank outlet tube has a restrictor in its base. This ensures the reservoir is always full by allowing more water in than out.

There is a small hole in the side of the tank outlet tube that allows air and water to pass into the vent chamber as it is heated.

Water in the vent chamber is suctioned back through the outlet tube vent hole when water is dispensed.





Expansion of water as it is heated in the reservoir will push the water out the faucet when the outlet tube vent hole becomes plugged with debris or scale.

The small Outlet Vent Hole is susceptible to scale build up and is a key indicator that descaling is required.

It is critical to descale the hot tank through the vent line and outlet line on a regular basis to prevent this problem.

Descaling through the inlet and/or outlet lines only will not clean the vent chamber and outlet vent hole properly.

RESETTING THE HOT TANK OVERLOAD OR HIGH LIMIT SAFETY

1.	Red Compressor/Heater Switch must be in the <i>O=OFF</i> position	
2.	Unplug the Power Cord from rear of WL2FL Water Treatment System .	
3.	Remove the Side Panel by removing the Front Hatch and Side Panels.	
4.	Locate the Hot Tank	
5.	Press the Reset Button	
6.	Replace the Lower Front Panel.	
7.	Plug in the Power Cord.	
8.	Turn on the Red Compressor / Heater Switch <i>I=ON</i> position The Hot and Cold Tanks must be filled with water BEFORE turning on the Red Heater and Compressor Switch.	
9.	Verify the cooler is fully operational before installing it at the customers' site.	

HOT TANK DESCALING INSTRUCTIONS

The Hot Tank requires removal of mineral deposits (descaling) on a regular basis. Typically descaling should take place every 6 to 12 months to preserve the long-term health of your unit.

Use non-toxic cleaner such as ScaleKleen, DEZCAL, 20% Citric Acid Solution, or Undiluted Vinegar Solution to remove mineral deposits as directed by the manufacturer depending upon filtration and local water conditions.

Descaling is an important process that removes calcium deposits, or scale, that can build up inside a tank over time. Calcium and scale are non-toxic but left unattended will hinder your unit's performance.

⚠️ WARNING! ***PERSONAL PROTECTIVE EQUIPMENT REQUIRED.** Always ensure proper ventilation and use rubber or nitrile gloves and eye protection when using chemicals. Refer to Material Safety Data Sheet for specific requirements of each product.*

⚠️ CAUTION! ***STAINLESS STEEL TANK DESCALING.** The Hot Tank is made from stainless steel. Ensure descaling solution is compatible with stainless and always flush the unit completely. Dispose in an environmentally safe manner.*

Materials Needed:

- Personal Protective Equipment. Rubber or Nitrile Safety Gloves and Protective Eyewear
 - Phillips Screwdriver
 - Temperature Gauge
 - Water Pitcher or Container to collect water from the faucet
 - 19 Liter (5 gallon) container or drain basin
 - Citric Acid Based Cleaner
 - ¼" Plastic Tubing, at least 4 feet in length, and assorted ¼" quick connect fittings
 - Sanitizing Cartridge
 - Food Coloring
1. Put descaler per directions and 3 drops of food coloring into the descaling cartridge.
 2. Connect descaling cartridge to the inlet water supply and connect to Inlet Bulkhead Fitting on the back of the **WL2FL Water Treatment System**. Turn on Water Supply.
 3. Select Hot Water and depress the Main Dispensing Button on the Front Control Panel until descaling solution (colored water) comes out of the faucet. Container and drain basic will be required to catch water from the faucet.
 4. Turn off water supply and remove sanitizing cartridge from inlet water supply. Reconnect water supply to inlet fitting.

5. Allow descaling solution to remain in the Hot Tank for 15 minutes (length of time may vary depending on water conditions).
6. Place a pitcher, catch basin or other container under the faucet of the **WL2FL Water Treatment System**.
7. Flush the Hot Tank until water runs clear.
8. Once clear Water dispenses from the faucet the Hot Tank has been descaled. Always ensure the **WL2FL Water Treatment System** is performing to the customer's satisfaction.

⚠ WARNING! HOT WATER. *The WL2FL Water Treatment System produces Hot Water up to 86°C (187°F). Water above 52°C (125°F) can cause severe burns or scalding. Hot water should be dispensed carefully into insulated container to avoid injury.*

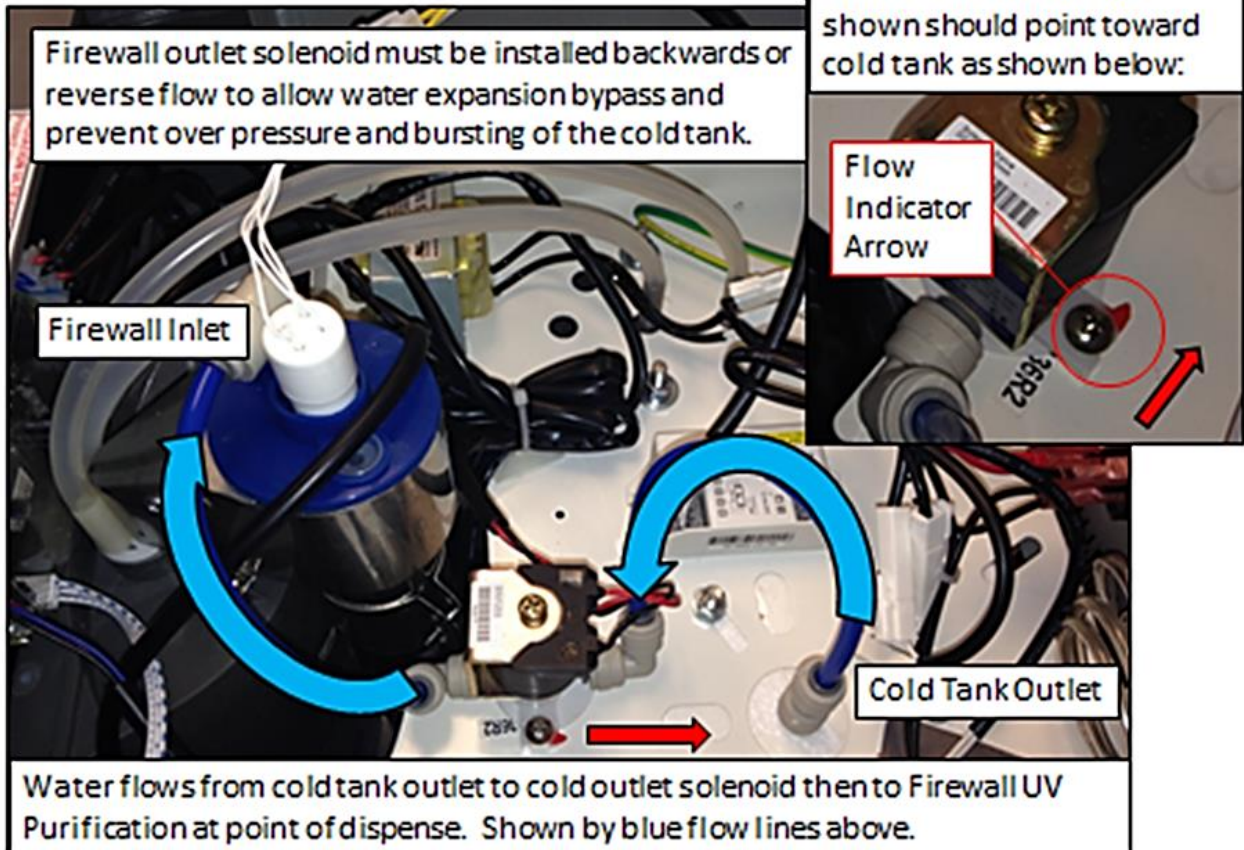
⚠ CAUTION! MUST REPLACE HOT TANK 3-5 YEARS DEPENDING ON USAGE. *The Hot Tank and its controls must be replaced a minimum of every three to five years to ensure efficient and dependable operation.*

⚠ WARNING! REINSTALL ALL PANELS AND COVERS. *Always reinstall all Panels, Protective Covers, and Fasteners after servicing equipment. Failure to do so could result in severe personal injury and will void the certifications and warranty of the equipment.*

FIREWALL™ OUTLET SOLENOID – REVERSE FLOW ORIENTATION

Firewall Outlet Solenoid – Reverse Flow Orientation

Firewall outlet solenoid must be installed backwards or reverse flow to allow water expansion bypass and prevent over pressure and bursting of the cold tank.



ADJUSTING COLD SET POINT

Cold Water Temperature – Factory Set Point is 41°F (5°C) and can be adjusted to 34°F - 54°F (1.1°C to 12.2°C)

The cold set point can be adjusted by accessing the cold thermostat adjustment screw under the decal at the rear of the unit.



Remove the red portion of the Cold Tank Temperature label to access the adjustment screw.

The factory set point is ~41°F and is indicated by the dot on sheet metal.



Turning the adjustment screw clockwise to lower the set point temperature.

Do not adjust past the “Max Cold” position at 3:00 position to avoid freezing the cold tank.



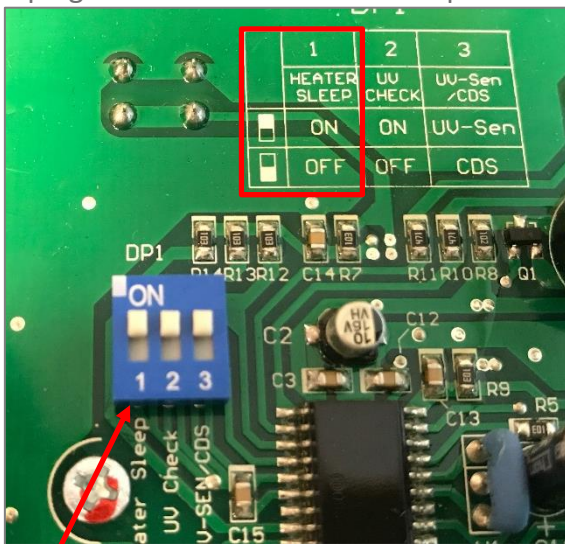
Turning the adjustment screw counter-clockwise to raise the set point temperature.

PROGRAMMING INSTRUCTIONS

DISABLING ENERGY SAVING SLEEP MODE

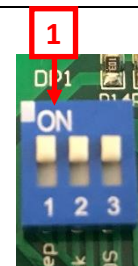
All **WL2FL Water Treatment Systems** come from the factory with Energy Saving Sleep Mode engaged to meet the Energy Star Certification requirements. Energy Saving Sleep Mode disables the heater circuit if the unit has not been used for a continuous 3 hour or longer period. Selecting any button "wakes up" the **WL2FL Water Treatment System** and turns the heater circuit back on. The hot tank will typically take less than 10 minutes to heat the water from ambient to the 85°C (185°F) set point.

Unplug Power Cord and remove Top Cover to access back side of the Display PCB.



WL2FL Water Treatment Systems comes with the Energy Saving Sleep Mode "ON" - the Default Position.

DIP 1 in the "ON" position (up).



Deactivate the Energy Saving Sleep Mode by moving DIP 1 in the "OFF" position (down).

