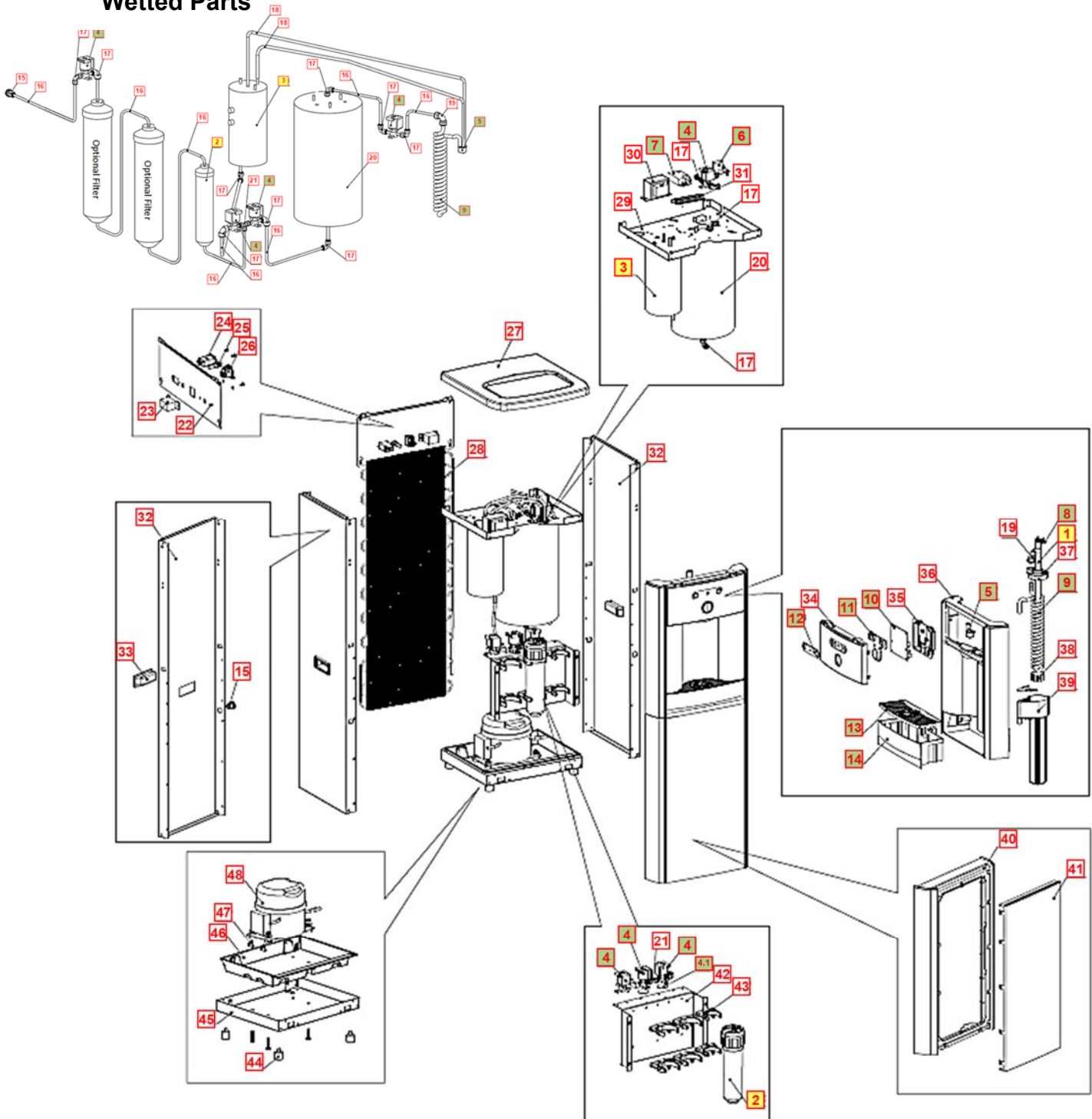


WL350 TOWER LAYOUT DRAWING AND PARTS LIST

Yellow = Consumables

Green = Recommended spare parts

Wetted Parts



WL350 TOWER LAYOUT DRAWING AND PARTS LIST

No	WLCP Part No.	Description	Factory PN	Stocked?	
Consumables					
1	12-8310	15W LTFW XTM UV Lamp	CT-2085-IA0-00	Yes	
2	FT-0063-IL Assy with FT-0064 Element	1-micron 10" Inline CBC Filter for CTO, Lead, Cyst and Asbestos Reduction (Carbon Block) Required for NSF Certification	FT-0063-IL Assy with FT-0064 Element	Yes	
3	12-5615	Hot Tank 1.6 Liter (.42 gallon) 100V / 500W Factory Set Point 185°F - 85°C	HT-3041	Yes	
Recommended Spare Parts					
3.1	12-6900	Thermostat and Overload Metal Cover <i>Recommend stocking 2 each for every 10 units purchased</i>	ST-0045-L00-00	Yes	
3.2	12-1360	Overload with Manual Reset - 105°C (221° F) <i>Recommend stocking 2 each for every 10 units purchased</i>	HT-3012	Yes	
3.3	12-1303	Hot Tank Thermostat - 87°C (187°F) <i>Recommend stocking 2 each for every 10 units purchased</i>	HT-3013A	Yes	
4	TBD	Solenoid Valve 1000mm (recommend replacing Solenoid Cushion at same time) <i>Recommend stocking 2 each for every 10 units purchased</i>	PU-0017-100-00	Yes	
4.1	CU-0001	Solenoid Cushion <i>Recommend stocking 2 each for every 10 units purchased</i>	CU-0001	Yes	
5	12-8370	Hot Water Faucet <i>Recommend stocking 2 each for every 10 units purchased</i>	PL-1351	Yes	

6	12-8365	Firewall UV Relay PCB <i>Recommend stocking 2 each for every 10 units purchased</i>	EN-6127	Yes	
7	12-8315	UV 15 W 120V/60Hz Electronic Ballast <i>Recommend stocking 2 each for every 10 units purchased</i>	EN-0008-L01-00	Yes	
8	12-8300	UVC Sensor Wire - 2FW *Includes: UVC Sensor wire with CT-2089 and PL-1358 <i>Recommend stocking 2 each for every 10 units purchased</i>	AK-0063	Yes	
9	12-8305	Quartz Spiral	FU-0007	Yes	
10	12-8355	Main PCB <i>Recommend stocking 2 each for every 10 units purchased</i>	EN-6126-L00-00	Yes	
11	12-8056	Silicon Button Key Mat <i>Recommend stocking 2 each for every 10 units purchased</i>	PL-1153	Yes	
12	12-8057	Button Label <i>Recommend stocking 2 each for every 10 units purchased</i>	LP-7084	Yes	
13	12-8150	Drip Tray Grill – Charcoal <i>Recommend stocking 2 each for every 10 units purchased</i>	PL-1152	Yes	
14	12-8055	Drip Tray - Charcoal with Waterlogic Logo <i>Recommend stocking 2 each for every 10 units purchased</i>	PL-1156	Yes	
Not Shown	01-2076	Scale Kleen <i>Recommend stocking 5 each for every 10 units purchased</i>	NA	Yes	
Remaining Parts					
15	10-3067	Bulkhead Union ¼" x ¼" John Guest P/N PI1208S	PU-4028	Yes	
16	Purchase from John Guest	JG LLD PE Tube - Blue O.D.1/4" John Guest P/N PE-08-BI-1000F-B	PU-4031	No	



17	Purchase from John Guest	1/4" Union Elbow John Guest P/N P10308S	PU-4008	No	
18	10-7040	Silicon Tube 5/16" for Hot Water	PU-4064-L00-00	Yes	
19	Purchase from John Guest	JG 3/8" x 1/4" Reducing Fitting(P1211208S)	PU-4137	No	
20	NA	4L (1G) Cold Tank Assembly (No UV holder, No sub-tank) – Tower Only	CT-2017-A	No	
21	Purchase from John Guest	1/4" Union Tee John Guest P/N P10208S	PU-4011	No	
22	12-5673	Silver Back Panel	ST-8135-A	No	
23	19-1069	Cold Tank Thermostat	CT-2070-A	Yes	
23.1	LP-0326	Cold Thermostat Cover Label	LP-0326-I00-00	Yes	
24	10-4013	Power Socket	EL-5016	Yes	
25	EL-5053	Fuse Holder and Fuse 120V / 15A with One Wire	EL-5053	Yes	
25.1	10-3013	Fuse 120V / 15A	EL-5010	Yes	
26	10-3008	Red Compressor & Heater Switch	EL-5004	Yes	

27	12-8054	Top Cover – Tower Only	PL-1250	Yes	
28	12-8102	Wire Condenser – Tower Only	CO-9027	Special Order	
28.1	12-1001	Filter Dryer	CO-0008	Yes	
29	12-8003	Upper Shelf	ST-8136-R2	Yes	
30	12-3117	Transformer 1.6A / 120 V for Firewall – Tower Only	EL-5003-A	Yes	
31	ST-0059-L00-00	Electric Ballast Bracket	NA	No	
32	12-8000	Silver Side Panel with Hole for Handle – Tower Only	ST-8157	Yes	
33	12-8058	Side Panel Plastic Handle Tower Only	PL-1123	Yes	
34	12-8360	Firewall Front upper insert panel	PL-1359	Yes	
35	12-8350	Main PCB Cover	PL-1357	Yes	
36	12-8345	Silver Front Panel for Drip Tray Insert-Firewall	PL-1146-A	Yes	
37	12-8320	Firewall UV Lamp Rubber	CT-2088	Yes	




38	FW-0020-LA0-00	Firewall Buffer	FW-0020-L00	Yes	
39	TBD	Firewall Mark IV Stainless Assembly (No internal components)	FW-0027-I00-00	Yes	
40	12-8052	Front Bottom Panel – Tower Only	PL-1148	Yes	
41	12-8053	Front Bottom Insert Panel – Tower Only	PL-1149	Yes	
42	12-8005	Filter Bracket – Tower Only	ST-8138	Yes	
43	20-1010	2.8" Filter Clip	PU-4161	Yes	
44	10-3083	Unit Rubber Feet – Tower Only	ST-8167CN	Yes	
45	12-8004	Bottom Tray	ST-8137	Yes	
46	NA	Leak Tray – Tower Only	PL-1294-A	No	
47	12-3180	Leak Containment Tray Clip (sensor 0.5mm)	ST-8207-CN	Yes	

Verify compressor in machine before ordering parts as the Compressor P/N CO-0020-L00-00 and 10-2200 (CO-0001A) and related parts are not interchangeable.

CO-0020-L00-00 Compressor

48A.1	CO-0020-L00-00	LG Compressor 120V R134A CSB035LJCM	CO-0020-L00-00	Yes	
48A.2	CO-0019-L00-00	Compressor Capacitor	CO-0019-L00-00	Yes	
48A.3	ST-0216-L00-00	Capacitor Bracket	ST-0216-L00-00	Yes	
48A.4	CO-0017-L00-00	PTC Relay	CO-0017-L00-00	Yes	
48A.5	CO-0018-L00-00	Overload Protector	CO-0018-L00-00	Yes	

CO-9001-A / 10-2200 Compressor

48B.1	10-2200	Compressor (R134a 1/8HP) 120V/60Hz	CO-9001-A	Yes	
48B.2	10-3003	Compressor Starter Relay	CO-9016	Yes	
48B.3	10-5018	Compressor Overload	CO-9015	Yes	
Not shown	10-3007	Power Cord 120V – 1840 mm	EL-5001-B	Yes	